

ARTICLE NUMBER 1831-SKC04025P061

MULTILINE E



Power plug, male

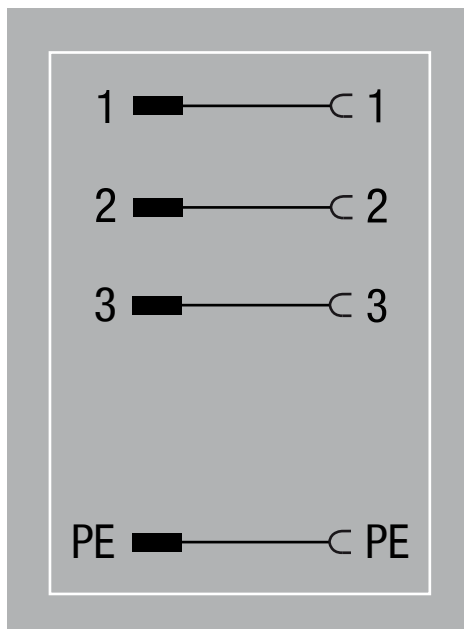
Insert - Socket type C

M12

4-pole

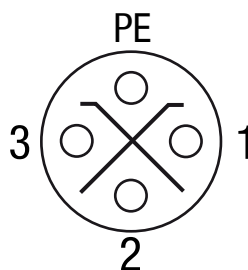
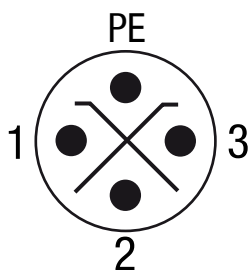
S-coded

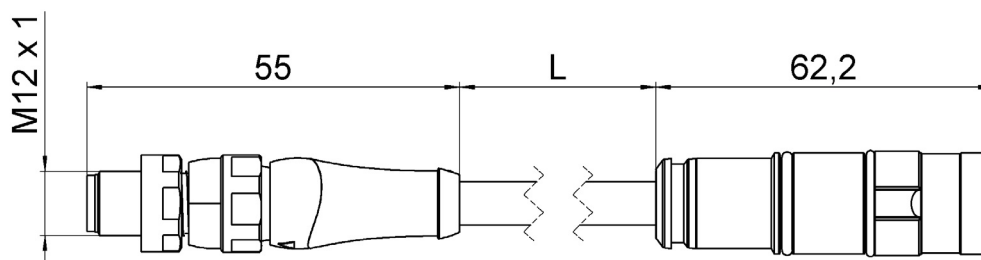
fits to electrical insert  
1831-SKC04025P062



Male

Female





### General data

Temperature range (fixed)	-25 to +80 °C
Temperature range (moving)	-25 to +80 °C
Rated impuls voltage	1,5 kV
Mounting method	inserted, tightened

### Technical data

Operating voltage	max. 600 V AC
Operating current per contact (40°C)	max. 12 A
Number of poles	4
Coding	S-coded
Locking of ports	screw thread (M12×1 mm) recommended torque 0,6 Nm, self-securing
Compression gland	M12
Protection	IP65 and IP67 when inserted and tightened (EN 60529)
Material group	Category I according to IEC 60664-1
Material (base body)	POM

### Cables

Cable length (L)	25 cm
Cable identification	P06
Number/diameter of wires	4 x 1,5 mm <sup>2</sup>
Wire isolation	PP
Material (jacket)	PUR
Outer Ø (jacket)	7,2 mm ± 5%
Color (jacket)	black
Bend radius (fixed)	7,5 x outer Ø
Bend radius (moving)	10 x outer Ø

### Commercial data

Minimum order quantity	1
Country of origin	DE