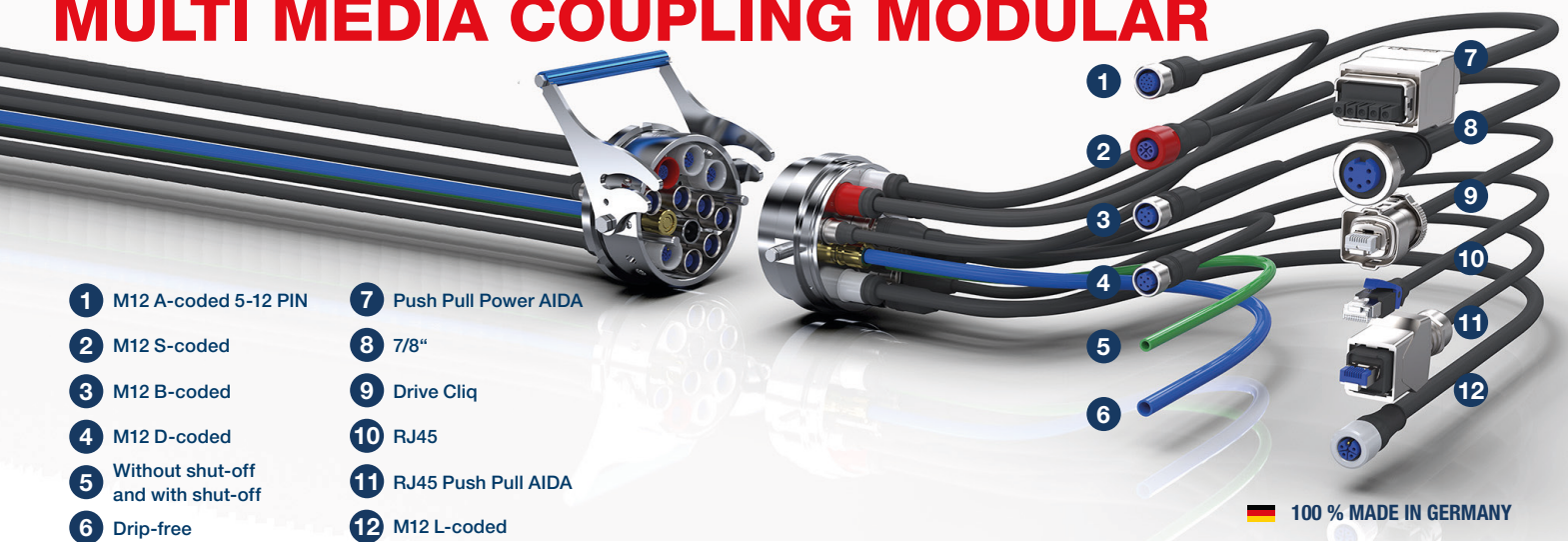


MULTI MEDIA COUPLING MODULAR



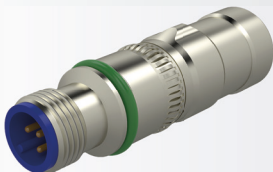
- | | |
|--------------------------------------|------------------------|
| 1 M12 A-coded 5-12 PIN | 7 Push Pull Power AIDA |
| 2 M12 S-coded | 8 7/8" |
| 3 M12 B-coded | 9 Drive Cliq |
| 4 M12 D-coded | 10 RJ45 |
| 5 Without shut-off and with shut-off | 11 RJ45 Push Pull AIDA |
| 6 Drip-free | 12 M12 L-coded |

100% MADE IN GERMANY

MAXIMUM MODULARITY IN THE INDUSTRIAL ENVIRONMENT

- ✓ One interface for compressed air, gases, fluids, electrical and electronic signals
- ✓ Maximum modularity due to freely configurable connections
- ✓ Different media can be connected and disconnected simultaneously
- ✓ Integrated coding patterns in the housings prevents incorrect connections
- ✓ Easy, tool-free mounting and dismounting
- ✓ Locking lever reduces the manual force needed for assembly
- ✓ Shorter machine set-up times

ELECTRICS

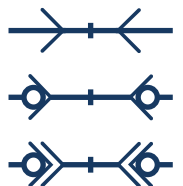


- For connection of a wide variety of M12 connection lines (4-pin, 5-pin, 6-pin, 8-pin and 12-pins)
- A-coded, B-coded, D-coded, L-coded and S-coded
- Operating voltage 30V to 600V possible
- Operating current per contact 1,5A to 12A
- Protection IP65 and IP67 when inserted and tightened (EN 60529)
- Applications: sensor | actuator, Fieldbus, Industrial Ethernet, Power transmission for AC | DC

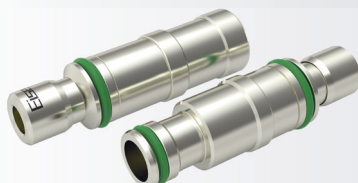
LIQUIDS



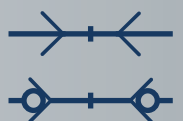
- Without shut-off and with shut-off
- **DRIP-FREE**
- Material: brass dezincification-resistant | stainless steel
- Seals: FKM* -20 to 120 °C (-4 to 248 °F) *
- Working pressure range: -0,8 to 16 bar (-11,5 to 232 psi)
- Allowable medium: cooling water



PNEUMATIC AND GASES



- Without shut-off and with shut-off
- Material: brass nickel-plated | brass dezincification-resistant | stainless steel
- Seals: FKM* -20 to 120 °C (-4 to 248 °F) *
- Working pressure range: -0,8 to 16 bar (-11,5 to 232 psi)
- Allowable medium: air, vacuum and cooling water



*more on request

www.eisele.eu