

MULTILINE 1800 | 1811 PROGRAM

Coupling system with compact design







EISELE IS QUALITY MADE IN GERMANY

Over 30 patents, more than 8,000 standard articles, and 2,000 customized solutions impressively underline our top quality performance. Whether the solution is configured from standard components or individually customized: all EISELE products boast convincing quality, long lifetimes and sophisticated technology.

Our company is loyal to its philosophy and its roots. Germany is the place where we find our highly qualified employees – the workforce responsible for our company's output. With a manufacturing depth of almost 100%, and stock being kept at the production site itself, we can optimally supply our customers, and respond quickly to fulfill needs and technical specifications. EISELE is part of a global logistics network that guarantees the fast availability of our products on the global market.

DIN EN ISO 9001: 2015 – EISELE has been certified since 1994. We have continuously been updating this quality standard and will continue to maintain it with future certifications. The elements of our basic philosophy include sustainable quality, flexibility and continuous improvement. Since 2014 Eisele is certified regarding the international economic standard DIN EN ISO 14001:2015.

Note

As a supplier of high-quality connection solutions we offer specially tailored connections and tubes to your specific application.

The user is responsible for the right selection of the material.

Content overview

Page

Series

EISELE MULTILINE 1800 | 1811



1800 - Multiple couplings without shut-off

7

1800

Economically priced standard coupling with plug connectors - fully mounted delivery



1811 - Multiple couplings without and with shut-off

11

1811

Intuitive and unmistakable operation for compressed air and vacuum applications



Accessories

21

ACC

Ideal supplement to the MULTILINE



Plastic tubes

31

99

PE, PA, PU, PU-H, ProWeld, PTFE, FEP, PFA, PVDF

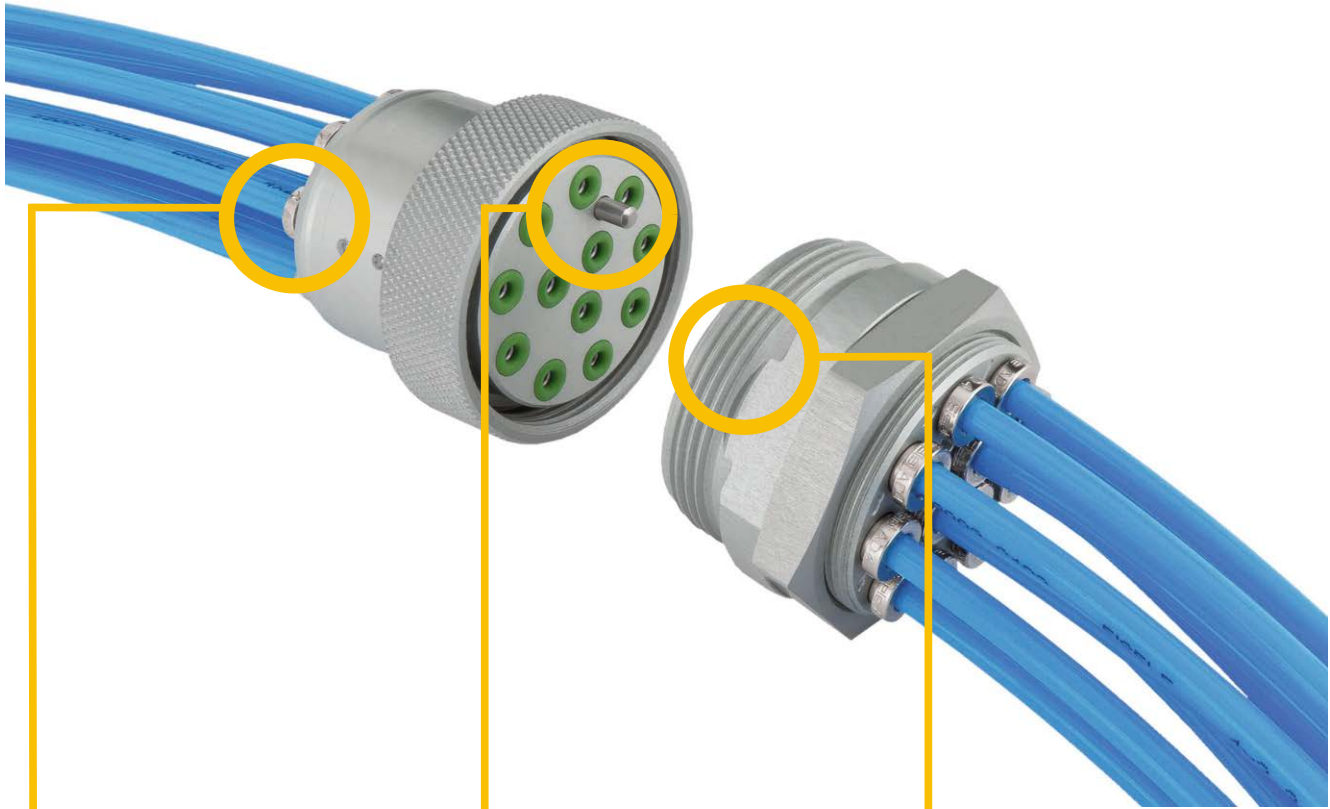
Technical information

41

Index

45

1800 - Multiple couplings without shut-off



Low Total costs

- Fully mounted delivery
- Quick connection for tube mounting
- Full tube passage

High-quality Processing

- Metal housing
- Made in Germany
- Exclusive design

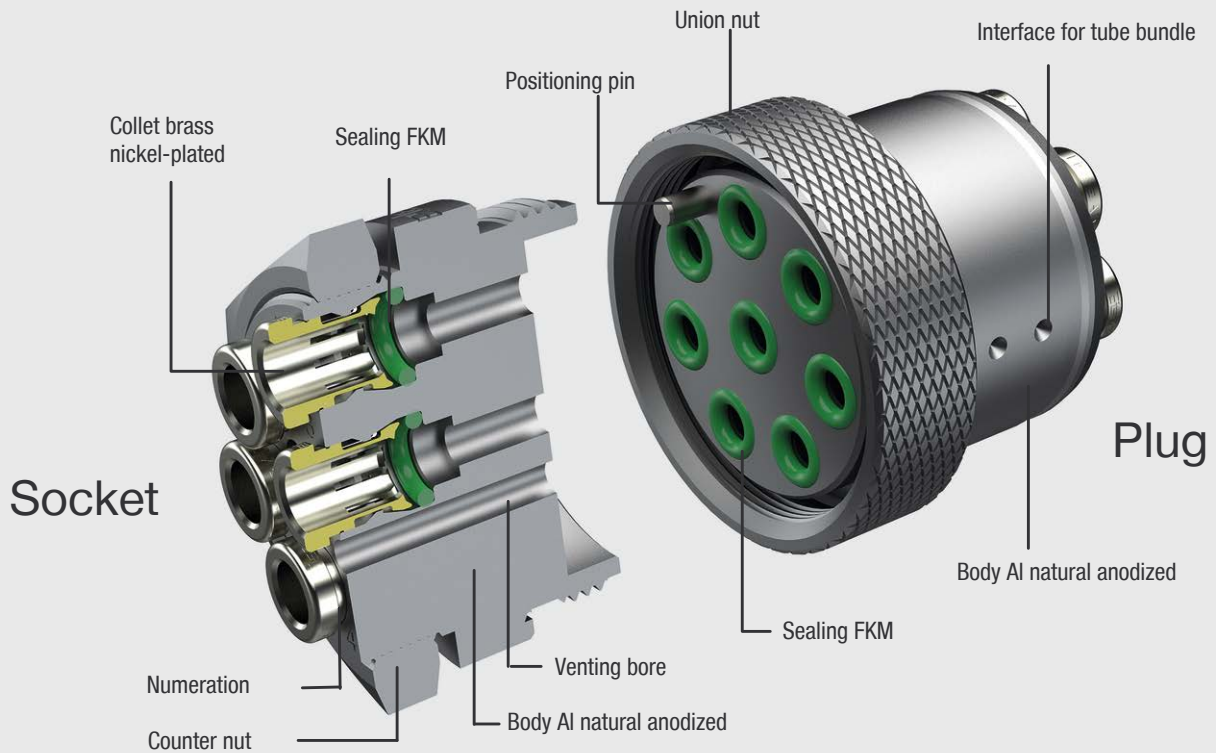
Time- and Space-saving

- Space-optimized construction
- Patented quick connections
- Assembly errors will be prevented through the use of positioning pins
- 4 to 12 connections can be integrated

1800

EISELE MULTILINE 1800 | 1811

Functional principle



The tubes are inserted into the numbered quick-connect couplings. The tubes are held securely in the housing by the collets. Even after a long period of time, the tubes can be released and re-inserted easily without any damage.

The positioning pin is used to locate the correct position when connecting the coupling. The two halves of the coupling are connected securely using the union nut.

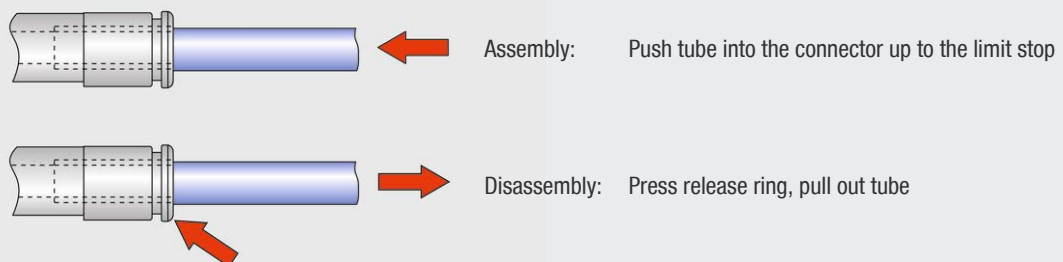
Service conditions

- Temperature range: -20 up to +120°C (-4 up to 248 °F)
- Working pressure range 0,95 to 16 bar (-14 to 232 psi)
- Qualified for compressed air and vacuum
- Very fast and easy assembly
- Connect and disconnect without tools possible
- cannot be connected and disconnected under pressure
- Full tube passage

Range of application

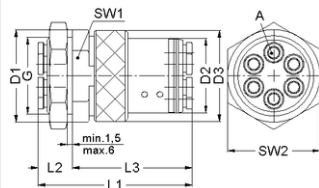
- Tool change
- Modul change
- Apparatus engineering
- Engineering
- Plant construction
- Robots

Handling





Multiple coupling without shut-off



- Material: aluminum natural anodized, brass nickel-plated
- Seal: FKM* -20 to 120 °C (-4 to 248 °F)
- Working pressure range: -0,95 to 16 bar (-14 to 232 psi)
- Mountable as bulkhead
- Suitable for compressed air, vacuum

1800

Part no.	Assembly	Design	for tube	L1	L2	L3	G	D1	D2	D3	SW1	SW2	NW	g/piece
VT1800-040201	socket	4-fold	OD4 (5/32")	59	13,5	-	M23x1	29	-	-	23	27	2,5	35
VT1800-040202	plug	4-fold	OD4 (5/32")	59	-	45,5	-	-	23	30	-	-	2,5	42
VT1800-040401	socket	4-fold	OD6	59	13,5	-	M30x1	36	-	-	30	36	4	58
VT1800-040402	plug	4-fold	OD6	59	-	45,5	-	-	29	35,5	-	-	4	61
VT1800-040601	socket	4-fold	OD8 (5/16")	59,5	13,5	-	M36x1	44	-	-	36	41	6	87
VT1800-040602	plug	4-fold	OD8 (5/16")	59,5	-	46	-	-	36	44	-	-	6	95
VT1800-040901	socket	4-fold	OD12	67,5	18	-	M50x1	63	-	-	-	58	9	205
VT1800-040902	plug	4-fold	OD12	67,5	-	49,5	-	-	51	SW60	-	-	9	203
VT1800-060201	socket	6-fold	OD4 (5/32")	59	13,5	-	M30x1	36	-	-	30	36	2,5	59
VT1800-060202	plug	6-fold	OD4 (5/32")	59	-	45,5	-	-	29	35,5	-	-	2,5	64
VT1800-060401	socket	6-fold	OD6	59	13,5	-	M36x1	44	-	-	36	41	4	80
VT1800-060402	plug	6-fold	OD6	59	-	45,5	-	-	34	44	-	-	4	81
VT1800-060601	socket	6-fold	OD8 (5/16")	64,5	15,5	-	M50x1	55	-	-	50	56	6	176
VT1800-060602	plug	6-fold	OD8 (5/16")	64,5	-	49,5	-	-	48	55	-	-	6	163
VT1800-080201	socket	8-fold	OD4 (5/32")	59	13,5	-	M30x1	36	-	-	30	36	2,5	59
VT1800-080202	plug	8-fold	OD4 (5/32")	59	-	45,5	-	-	29	35,5	-	-	2,5	65
VT1800-080401	socket	8-fold	OD6	59	13,5	-	M36x1	44	-	-	36	41	4	83
VT1800-080402	plug	8-fold	OD6	59	-	45,5	-	-	36	44	-	-	4	92
VT1800-080601	socket	8-fold	OD8 (5/16")	65	15,5	-	M50x1	55	-	-	50	56	6	177
VT1800-080602	plug	8-fold	OD8 (5/16")	65	-	49,5	-	-	48	55	-	-	6	157
VT1800-100201	socket	10-fold	OD4 (5/32")	59	13,5	-	M36x1	42	-	-	36	41	2,5	86
VT1800-100202	plug	10-fold	OD4 (5/32")	59	-	45,5	-	-	34	44	-	-	2,5	91
VT1800-100401	socket	10-fold	OD6	64,5	15,5	-	M50x1	55	-	-	50	56	4	178
VT1800-100402	plug	10-fold	OD6	64,5	-	49	-	-	48	55	-	-	4	159
VT1800-100601	socket	10-fold	OD8 (5/16")	65	17,5	-	M60x1	69,5	-	-	60	67	6	196
VT1800-100602	plug	10-fold	OD8 (5/16")	65	-	47,5	-	-	58	68	-	-	6	235
VT1800-120201	socket	12-fold	OD4 (5/32")	59	13,5	-	M36x1	42	-	-	36	41	2,5	180
VT1800-120202	plug	12-fold	OD4 (5/32")	59	-	45,5	-	-	36	44	-	-	2,5	180
VT1800-120401	socket	12-fold	OD6	64,5	15,5	-	M50x1	55	-	-	50	56	4	204
VT1800-120402	plug	12-fold	OD6	64,5	-	49	-	-	48	55	-	-	4	197
VT1800-120601	socket	12-fold	OD8 (5/16")	65	17,5	-	M60x1	69,5	-	-	-	67	6	83
VT1800-120602	plug	12-fold	OD8 (5/16")	65	-	47,5	-	-	58	68	-	-	6	91
VT1800-161801	socket	16-fold	OD3	61	13,5	-	M34x1	40	-	-	36	41	2,3	117
VT1800-161802	plug	16-fold	OD3	61	-	47,5	-	-	34	41,5	-	-	2,3	130
VT1800-160201	socket	16-fold	OD4 (5/32")	63	15,5	-	M40x1	46	-	-	41	46	2,5	117
VT1800-160202	plug	16-fold	OD4 (5/32")	63	-	47,5	-	-	40	49	-	-	2,5	130
VT1800-160401	socket	16-fold	OD6	64,5	16,5	-	M50x1	63	-	-	-	58	4	207
VT1800-160402	plug	16-fold	OD6	64,5	-	48	-	-	51	SW60	-	-	4	204
VT1800-160601	socket	16-fold	OD8 (5/16")	66	17,5	-	M70x1	81,5	-	-	-	76	6	361
VT1800-160602	plug	16-fold	OD8 (5/16")	66	-	48,5	-	-	70	SW80	-	-	6	370
VT1800-220401	socket	22-fold	OD6	65	17	-	M64x1	75	-	-	-	72	4	316
VT1800-220402	plug	22-fold	OD6	65	-	48	-	-	63	SW72	-	-	4	625
VT1800-220601	socket	22-fold	OD8 (5/16")	66	17	-	M80x1	90	-	-	-	86	6	452
VT1800-220602	plug	22-fold	OD8 (5/16")	66	-	49	-	-	79	SW87	-	-	6	454

1800 - Multiple couplings without shut-off

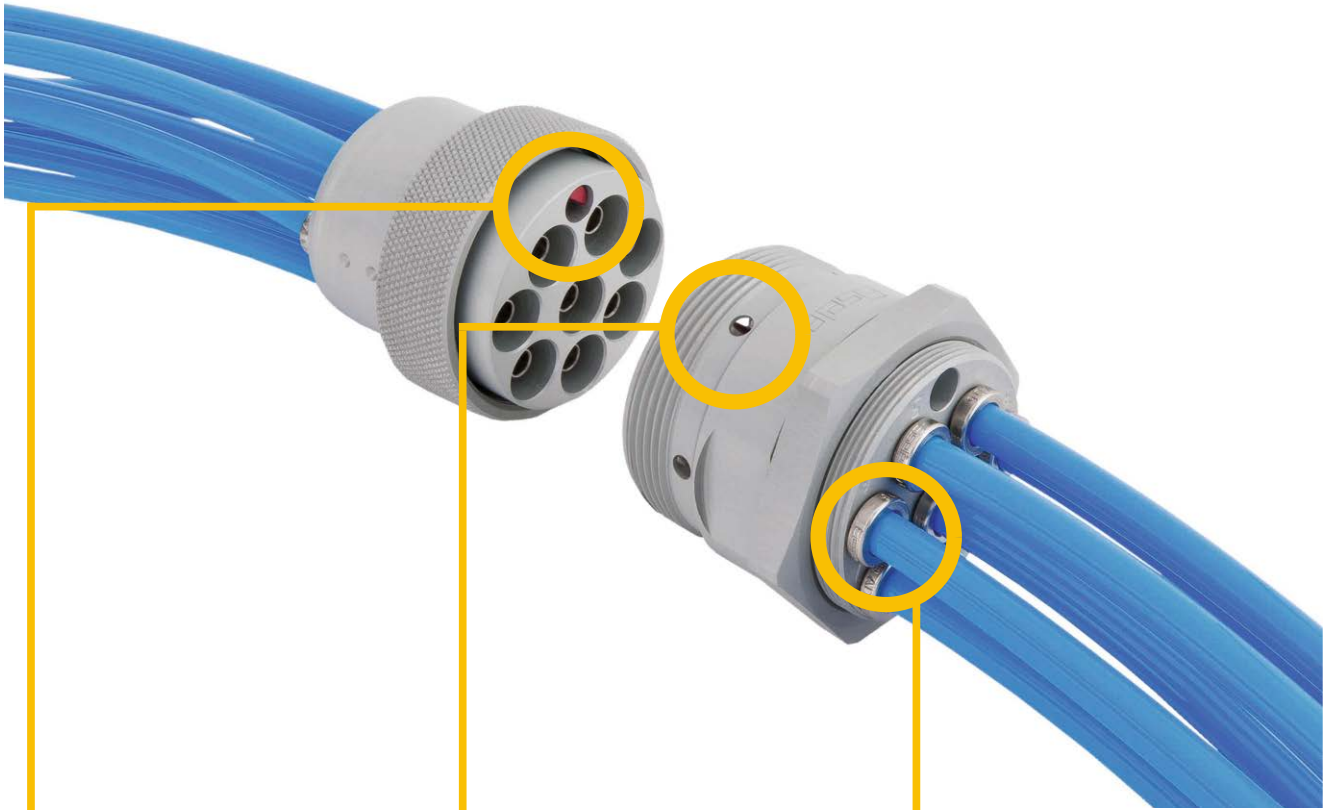
10

Aluminum natural anodized, brass nickel-plated

Part no.	Assembly	Design	for tube	L1	L2	L3	G	D1	D2	D3	SW1	SW2	NW	g/piece
VT1800-240201	socket	24-fold	OD4 (5/32")	64	16	-	M50x1	65	-	-	-	58	2,5	223
VT1800-240202	plug	24-fold	OD4 (5/32")	64	-	48	-	-	51	SW60	-	-	2,5	309
VT1800-260401	socket	26-fold	OD4	65,5	13,5	-	M70x1	81,5	-	-	-	80	4	363
VT1800-260402	plug	26-fold	OD4	65,5	-	48	-	-	70	SW76	-	-	4	373
VT1800-320401	socket	32-fold	OD6	65,5	17	-	M80x1	90	-	-	-	86	4	456
VT1800-320402	plug	32-fold	OD6	65,5	-	48,5	-	-	79	SW87	-	-	4	459

1800

1811 - Multiple couplings with shut-off

**Intuitive Handling**

- Plug position can be found through asymmetry
- 4 different coding possibilities available through optional coding pins

Time- and Space-saving

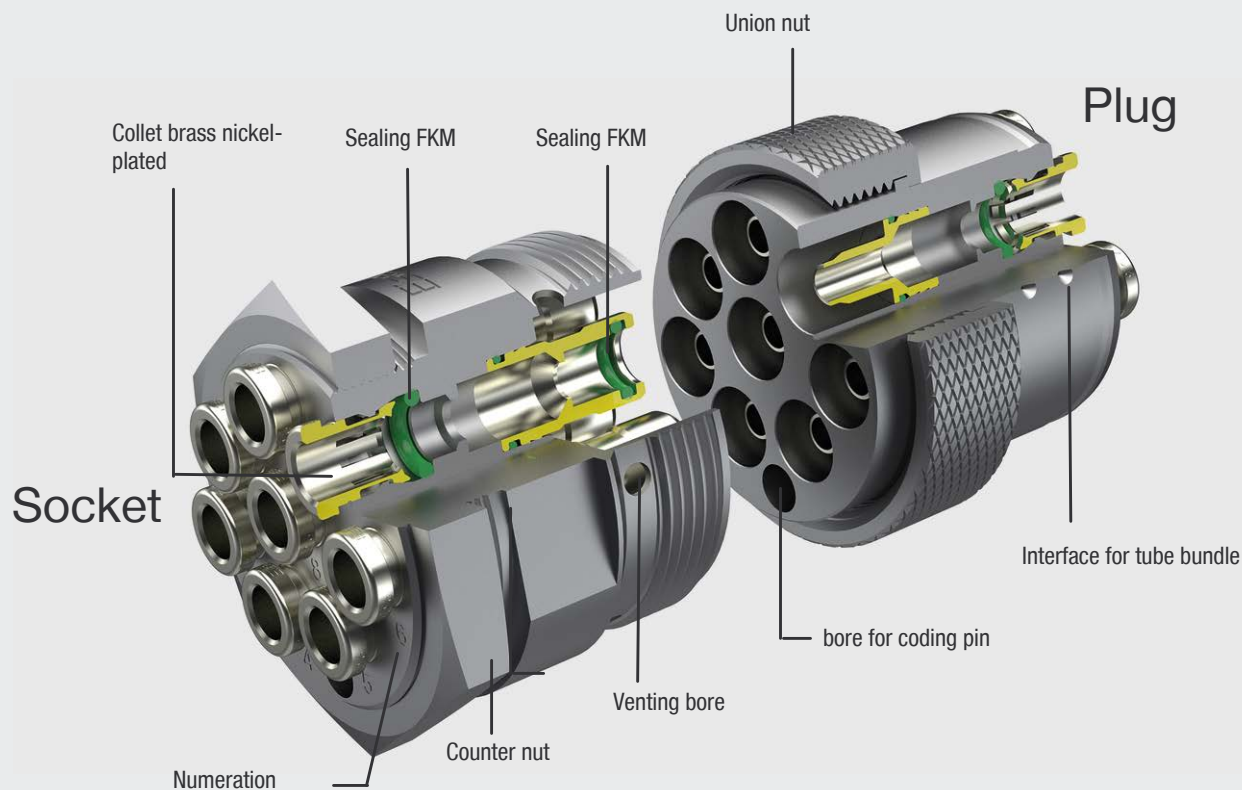
- Optimized for constructed spaces
- Patented quick connection
- Selectable from 4 to 12 connections

High-quality Processing

- Metal housing
- Made in Germany
- Exclusive design
- With and without shut-off valves

1811

Functional principle



The tubes are inserted into the numbered quick-connect couplings. The tubes are held securely in the housing by the collets. Even after a long period of time, the tubes can be released and re-inserted easily without damage.

When connecting the coupling, the correct position can be found intuitively. Any confusion between several couplings is impossible, thanks to the four optionally-available coding pins. The two halves of the coupling are connected securely using the union nut.

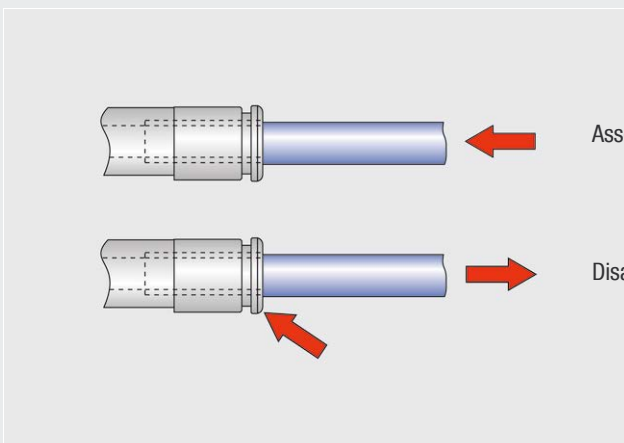
Service conditions

- Temperature range: -20 up to +120°C (-4 up to 248 °F)
- Working pressure range: -0.95 up to 16 bar (-14 up to 232 psi)
- Flow-rate optimized
- Very fast and easy assembly
- Connect and disconnect without tools possible
- Qualified for compressed air and vacuum
- Depending on the design of the shut-offs, connection and disconnection also under pressure

Range of application

- Tool change
- Modul change
- Apparatus engineering
- Engineering
- Plant construction
- Robots

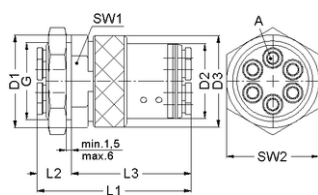
Handling



Assembly: Push tube into the connector up to the limit stop

Disassembly: Press release ring, pull out tube

Multiple coupling | without shut-off

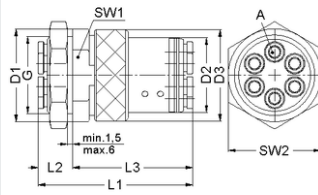


- Material: Aluminum natural anodized, brass nickel-plated
- Seal: FPM -20 to 120 °C (-4 to 248 °F)
- Working pressure range: -0,8 to 16 bar (-11,5 to 232 psi)
- Can be assembled as bulkhead
- Suitable for compressed air, vacuum

Part no.	Assembly	Design	for tube	L1	L2	L3	G	D1	D2	D3	SW1	SW2	NW	g/piece
VT1811-04020001	socket	4-fold	OD4 (5/32")	58,5	13,5	-	M25x1	30	-	-	25	30	2,5	49
VT1811-04020002	plug	4-fold	OD4 (5/32")	58,5	-	45	-	-	26	34	-	-	2,5	56
VT1811-04040001	socket	4-fold	OD6	72	15,5	-	M30x1	35,8	-	-	30	36	4	86
VT1811-04040002	plug	4-fold	OD6	72	-	56,5	-	-	30	39,5	-	-	4	87
VT1811-04060001	socket	4-fold	OD8 (5/16")	87,5	19	-	M42x1	50	-	-	42	50	6	194
VT1811-04060002	plug	4-fold	OD8 (5/16")	87,5	-	68,5	-	-	42	53,8	-	-	6	194
VT1811-06020001	socket	6-fold	OD4 (5/32")	58,5	13,5	-	M30x1	35,5	-	-	32	36	2,5	150
VT1811-06020002	plug	6-fold	OD4 (5/32")	58,5	-	45	-	-	30	39,5	-	-	2,5	78
VT1811-06040001	socket	6-fold	OD6	72,5	16	-	M36x1	41,8	-	-	36	41	4	120
VT1811-06040002	plug	6-fold	OD6	72,5	-	56,5	-	-	36	46,5	-	-	4	123
VT1811-06060001	socket	6-fold	OD8 (5/16")	87,5	19	-	M50x1	56	-	-	50	56	6	269
VT1811-06060002	plug	6-fold	OD8 (5/16")	87,5	-	68,5	-	-	50	61	-	-	6	264
VT1811-08020001	socket	8-fold	OD4 (5/32")	58,5	13,5	-	M34x1	39,8	-	-	34	41	2,5	93
VT1811-08020002	plug	8-fold	OD4 (5/32")	58,5	-	45	-	-	34	41,5	-	-	2,5	90
VT1811-08040001	socket	8-fold	OD6	73	16	-	M40x1	45,8	-	-	41	46	4	148
VT1811-08040002	plug	8-fold	OD6	73	-	57	-	-	40	49	-	-	4	144
VT1811-08060001	socket	8-fold	OD8 (5/16")	87,5	19	-	M54x1	64,8	-	-	-	60	6	334
VT1811-08060002	plug	8-fold	OD8 (5/16")	87,5	-	68,5	-	-	55	64,8	-	-	6	309
VT1811-10020001	socket	10-fold	OD4 (5/32")	58,5	13,5	-	M38x1	50	-	-	41	46	2,5	112
VT1811-10020002	plug	10-fold	OD4 (5/32")	58,5	-	45	-	-	37	46	-	-	2,5	114
VT1811-10040001	socket	10-fold	OD6	73,5	16	-	M46x1	52	-	-	46	52	4	192
VT1811-10040002	plug	10-fold	OD6	73,5	-	57,5	-	-	46	56	-	-	4	195
VT1811-12020001	socket	12-fold	OD4 (5/32")	61,5	15,5	-	M42x1	47,8	-	-	46	50	2,5	147
VT1811-12020002	plug	12-fold	OD4 (5/32")	61,5	-	46	-	-	42	53,8	-	-	2,5	157
VT1811-12040001	socket	12-fold	OD6	73,5	16	-	M48x1	54	-	-	50	54	4	219
VT1811-12040002	plug	12-fold	OD6	73,5	-	57,5	-	-	48	60	-	-	4	214
VT1811-16020001	socket	16-fold	OD4 (5/32")	61,5	15,5	-	M48x1	54	-	-	46	54	2,5	189
VT1811-16020002	plug	16-fold	OD4 (5/32")	61,5	-	46	-	-	48	60	-	-	2,5	197

1811

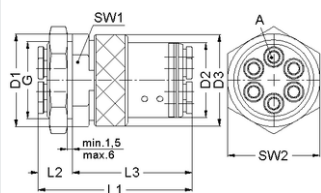
Multiple coupling | with shut-off on the plug side



- Material: Aluminum natural anodized, brass nickel-plated
- Seal: FPM -20 to 120 °C (-4 to 248 °F)
- Working pressure range: 0 to 16 bar (0 to 232 psi)
- Can be assembled as bulkhead
- Suitable for compressed air, vacuum

Part no.	Assembly	Design	for tube	L1	L2	L3	G	D1	D2	D3	SW1	SW2	NW	g/piece
VT1811-04020001	socket	4-fold	OD4 (5/32")	58,5	13,5	-	M25x1	30	-	-	25	30	2,5	49
VT1811-04020102	plug	4-fold	OD4 (5/32")	58,5	-	45	-	-	26	33,8	-	-	2,5	57
VT1811-04040001	socket	4-fold	OD6	72	15,5	-	M30x1	35,8	-	-	30	36	4	86
VT1811-04040102	plug	4-fold	OD6	72	-	56,5	-	-	30	39,5	-	-	4	89
VT1811-04060001	socket	4-fold	OD8 (5/16")	87,5	19	-	M42x1	50	-	-	42	50	6	194
VT1811-04060102	plug	4-fold	OD8 (5/16")	87,5	-	68,5	-	-	42	53,8	-	-	6	207
VT1811-06020001	socket	6-fold	OD4 (5/32")	58,5	13,5	-	M30x1	35,5	-	-	32	36	2,5	150
VT1811-06020102	plug	6-fold	OD4 (5/32")	58,5	-	45	-	-	30	39,5	-	-	2,5	80
VT1811-06040001	socket	6-fold	OD6	72,5	16	-	M36x1	41,8	-	-	36	41	4	120
VT1811-06040102	plug	6-fold	OD6	72,5	-	56,5	-	-	36	56,5	-	-	4	127
VT1811-06060001	socket	6-fold	OD8 (5/16")	87,5	19	-	M50x1	56	-	-	50	56	6	269
VT1811-06060102	plug	6-fold	OD8 (5/16")	87,5	-	68,5	-	-	50	61	-	-	6	273
VT1811-08020001	socket	8-fold	OD4 (5/32")	58,5	13,5	-	M34x1	39,8	-	-	34	41	2,5	93
VT1811-08020102	plug	8-fold	OD4 (5/32")	58,5	-	45	-	-	34	41,5	-	-	2,5	93
VT1811-08040001	socket	8-fold	OD6	73	16	-	M40x1	45,8	-	-	41	46	4	148
VT1811-08040102	plug	8-fold	OD6	73	-	57	-	-	40	49	-	-	4	149
VT1811-08060001	socket	8-fold	OD8 (5/16")	87,5	19	-	M54x1	64,8	-	-	-	60	6	334
VT1811-08060102	plug	8-fold	OD8 (5/16")	87,5	-	68,5	-	-	55	64,8	-	-	6	334
VT1811-10020001	socket	10-fold	OD4 (5/32")	58,5	13,5	-	M38x1	50	-	-	41	46	2,5	112
VT1811-10020102	plug	10-fold	OD4 (5/32")	58,5	-	45	-	-	37	46	-	-	2,5	115
VT1811-10040001	socket	10-fold	OD6	73,5	16	-	M46x1	52	-	-	46	52	4	192
VT1811-10040102	plug	10-fold	OD6	73,5	-	57,5	-	-	46	56	-	-	4	201
VT1811-12020001	socket	12-fold	OD4 (5/32")	61,5	15,5	-	M42x1	47,8	-	-	46	50	2,5	147
VT1811-12020102	plug	12-fold	OD4 (5/32")	61,5	-	46	-	-	42	53,8	-	-	2,5	161
VT1811-12040001	socket	12-fold	OD6	73,5	16	-	M48x1	54	-	-	50	54	4	219
VT1811-12040102	plug	12-fold	OD6	73,5	-	57,5	-	-	48	50	-	-	4	220
VT1811-16020001	socket	16-fold	OD4 (5/32")	61,5	15,5	-	M48x1	54	-	-	46	54	2,5	189
VT1811-16020102	plug	16-fold	OD4 (5/32")	61,5	-	46	-	-	48	50	-	-	2,5	197

Multiple coupling | with shut-off on the socket side

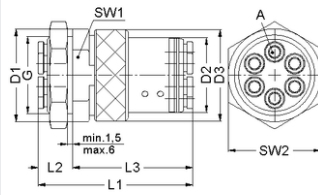


- Material: Aluminum natural anodized, brass nickel-plated
- Seal: FPM -20 to 120 °C (-4 to 248 °F)
- Working pressure range: 0 to 16 bar (0 to 232 psi)
- Can be assembled as bulkhead
- Suitable for compressed air, vacuum

Part no.	Assembly	Design	for tube	L1	L2	L3	G	D1	D2	D3	SW1	SW2	NW	g/piece
VT1811-04021001	socket	4-fold	OD4 (5/32")	58,5	13,5	-	M25x1	29,8	-	-	25	30	2,5	51
VT1811-04020002	plug	4-fold	OD4 (5/32")	58,5	-	45	-	-	26	34	-	-	2,5	56
VT1811-04041001	socket	4-fold	OD6	72	15,5	-	M30x1	35,8	-	-	30	36	4	90
VT1811-04040002	plug	4-fold	OD6	72	-	56,5	-	-	30	39,5	-	-	4	87
VT1811-04061001	socket	4-fold	OD8 (5/16")	87,5	19	-	M42x1	50	-	-	42	50	6	199
VT1811-04060002	plug	4-fold	OD8 (5/16")	87,5	-	68,5	-	-	42	53,8	-	-	6	194
VT1811-06021001	socket	6-fold	OD4 (5/32")	58,5	13,5	-	M30x1	35,8	-	-	32	36	2,5	75
VT1811-06020002	plug	6-fold	OD4 (5/32")	58,5	-	45	-	-	30	39,5	-	-	2,5	78
VT1811-06041001	socket	6-fold	OD6	72,5	16	-	M36x1	41,8	-	-	36	41	4	128
VT1811-06040002	plug	6-fold	OD6	72,5	-	56,5	-	-	36	46,5	-	-	4	123
VT1811-06061001	socket	6-fold	OD8 (5/16")	87,5	19	-	M50x1	56	-	-	50	56	6	277
VT1811-06060002	plug	6-fold	OD8 (5/16")	87,5	-	68,5	-	-	50	61	-	-	6	264
VT1811-08021001	socket	8-fold	OD4 (5/32")	58,5	13,5	-	M34x1	39,8	-	-	34	41	2,5	96
VT1811-08020002	plug	8-fold	OD4 (5/32")	58,5	-	45	-	-	34	41,5	-	-	2,5	90
VT1811-08041001	socket	8-fold	OD6	73	16	-	M40x1	45,8	-	-	41	46	4	156
VT1811-08040002	plug	8-fold	OD6	73	-	57	-	-	40	49	-	-	4	144
VT1811-08061001	socket	8-fold	OD8 (5/16")	87,5	19	-	M54x1	64,8	-	-	-	60	6	345
VT1811-08060002	plug	8-fold	OD8 (5/16")	87,5	-	68,5	-	-	55	64,8	-	-	6	309
VT1811-10021001	socket	10-fold	OD4 (5/32")	58,5	13,5	-	M38x1	44,8	-	-	41	46	2,5	119
VT1811-10020002	plug	10-fold	OD4 (5/32")	58,5	-	45	-	-	37	46	-	-	2,5	114
VT1811-10041001	socket	10-fold	OD6	73,5	16	-	M46x1	52	-	-	46	52	4	201
VT1811-10040002	plug	10-fold	OD6	73,5	-	57,5	-	-	46	56	-	-	4	195
VT1811-12021001	socket	12-fold	OD4 (5/32")	61,5	15,5	-	M42x1	47,8	-	-	46	50	2,5	153
VT1811-12020002	plug	12-fold	OD4 (5/32")	61,5	-	46	-	-	42	53,8	-	-	2,5	157
VT1811-12041001	socket	12-fold	OD6	73,5	16	-	M48x1	54	-	-	48	54	4	230
VT1811-12040002	plug	12-fold	OD6	73,5	-	57,5	-	-	48	60	-	-	4	214
VT1811-16021001	socket	16-fold	OD4 (5/32")	61,5	15,5	-	M48x1	54	-	-	46	54	2,5	197
VT1811-16020002	plug	16-fold	OD4 (5/32")	61,5	-	46	-	-	48	60	-	-	2,5	197

1811

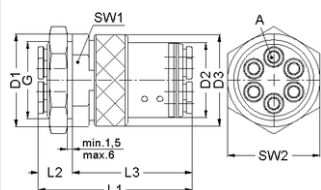
Multiple coupling | with shut-off on the both sides



- Material: Aluminum natural anodized, brass nickel-plated
- Seal: FPM -20 to 120 °C (-4 to 248 °F)
- Working pressure range: 0 to 16 bar (0 to 232 psi)
- Can be assembled as bulkhead
- Suitable for compressed air, vacuum

Part no.	Assembly	Design	for tube	L1	L2	L3	G	D1	D2	D3	SW1	SW2	NW	g/piece
VT1811-04021001	socket	4-fold	OD4 (5/32")	58,5	13,5	-	M25x1	29,8	-	-	25	30	2,5	51
VT1811-04020102	plug	4-fold	OD4 (5/32")	58,5	-	45	-	-	26	33,8	-	-	2,5	57
VT1811-04041001	socket	4-fold	OD6	72	15,5	-	M30x1	35,8	-	-	30	36	4	90
VT1811-04040102	plug	4-fold	OD6	72	-	56,5	-	-	30	39,5	-	-	4	89
VT1811-04061001	socket	4-fold	OD8 (5/16")	87,5	19	-	M42x1	50	-	-	42	50	6	199
VT1811-04060102	plug	4-fold	OD8 (5/16")	87,5	-	68,5	-	-	42	53,8	-	-	6	207
VT1811-06021001	socket	6-fold	OD4 (5/32")	58,5	13,5	-	M30x1	35,8	-	-	32	36	2,5	75
VT1811-06020102	plug	6-fold	OD4 (5/32")	58,5	-	45	-	-	30	39,5	-	-	2,5	80
VT1811-06041001	socket	6-fold	OD6	72,5	16	-	M36x1	41,8	-	-	36	41	4	128
VT1811-06040102	plug	6-fold	OD6	72,5	-	56,5	-	-	36	56,5	-	-	4	127
VT1811-06061001	socket	6-fold	OD8 (5/16")	87,5	19	-	M50x1	56	-	-	50	56	6	277
VT1811-06060102	plug	6-fold	OD8 (5/16")	87,5	-	68,5	-	-	50	61	-	-	6	273
VT1811-08021001	socket	8-fold	OD4 (5/32")	58,5	13,5	-	M34x1	39,8	-	-	34	41	2,5	96
VT1811-08020102	plug	8-fold	OD4 (5/32")	58,5	-	45	-	-	34	41,5	-	-	2,5	93
VT1811-08041001	socket	8-fold	OD6	73	16	-	M40x1	45,8	-	-	41	46	4	156
VT1811-08040102	plug	8-fold	OD6	73	-	57	-	-	40	49	-	-	4	149
VT1811-08061001	socket	8-fold	OD8 (5/16")	87,5	19	-	M54x1	64,8	-	-	-	60	6	345
VT1811-08060102	plug	8-fold	OD8 (5/16")	87,5	-	68,5	-	-	55	64,8	-	-	6	334
VT1811-10021001	socket	10-fold	OD4 (5/32")	58,5	13,5	-	M38x1	44,8	-	-	41	46	2,5	119
VT1811-10020102	plug	10-fold	OD4 (5/32")	58,5	-	45	-	-	37	46	-	-	2,5	115
VT1811-10041001	socket	10-fold	OD6	73,5	16	-	M46x1	52	-	-	46	52	4	201
VT1811-10040102	plug	10-fold	OD6	73,5	-	57,5	-	-	46	56	-	-	4	201
VT1811-12021001	socket	12-fold	OD4 (5/32")	61,5	15,5	-	M42x1	47,8	-	-	46	50	2,5	153
VT1811-12020102	plug	12-fold	OD4 (5/32")	61,5	-	46	-	-	42	53,8	-	-	2,5	161
VT1811-12041001	socket	12-fold	OD6	73,5	16	-	M48x1	54	-	-	48	54	4	230
VT1811-12040102	plug	12-fold	OD6	73,5	-	57,5	-	-	48	50	-	-	4	220
VT1811-16021001	socket	16-fold	OD4 (5/32")	61,5	15,5	-	M48x1	54	-	-	46	54	2,5	197
VT1811-16020102	plug	16-fold	OD4 (5/32")	61,5	-	46	-	-	48	50	-	-	2,5	197

Multiple coupling | with shut-off on the plug side | vacuum version**



- Material: Aluminum natural anodized, brass nickel-plated
- Seal: FPM -20 to 120 °C (-4 to 248 °F)
- Working pressure range: -0,8 to 16 bar (-11,5 to 232 psi)
- Can be assembled as bulkhead
- Suitable for compressed air, vacuum

Part no.	Assembly	Design	for tube	L1	L2	L3	G	D1	D2	D3	SW1	SW2	NW	g/piece
VT1811-04020001	socket	4-fold	OD4 (5/32")	58,5	13,5	-	M25x1	30	-	-	25	30	2,5	49
VT1811-04020202	plug	4-fold	OD4 (5/32")	58,5	-	45	-	30	26	34	-	-	2,5	57
VT1811-04040001	socket	4-fold	OD6	72	15,5	-	M30x1	35,8	-	-	30	36	4	86
VT1811-04040202	plug	4-fold	OD6	72	-	56,5	-	35,8	30	39,5	-	-	4	89
VT1811-04060001	socket	4-fold	OD8 (5/16")	87,5	19	-	M42x1	50	-	-	42	50	6	194
VT1811-04060202	plug	4-fold	OD8 (5/16")	87,5	-	68,5	-	48	42	54	-	-	6	207
VT1811-06020001	socket	6-fold	OD4 (5/32")	58,5	13,5	-	M30x1	35,5	-	-	32	36	2,5	150
VT1811-06020202	plug	6-fold	OD4 (5/32")	58,5	-	45	-	36	30	39,5	-	-	2,5	80
VT1811-06040202	plug	6-fold	OD6	72,5	-	56,5	-	41,8	36	45	-	-	4	127
VT1811-06060001	socket	6-fold	OD8 (5/16")	87,5	19	-	M50x1	56	-	-	50	56	6	269
VT1811-06060202	plug	6-fold	OD8 (5/16")	87,5	-	68,5	-	56	50	60	-	-	6	283
VT1811-08020001	socket	8-fold	OD4 (5/32")	58,5	13,5	-	M34x1	39,8	-	-	34	41	2,5	93
VT1811-08020202	plug	8-fold	OD4 (5/32")	58,5	-	45	-	39,8	34	41,5	-	-	2,5	93
VT1811-08040001	socket	8-fold	OD6	73	16	-	M40x1	45,8	-	-	41	46	4	148
VT1811-08040202	plug	8-fold	OD6	73	-	57	-	45,8	40	49	-	-	4	149
VT1811-08060001	socket	8-fold	OD8 (5/16")	87,5	19	-	M54x1	64,8	-	-	-	60	6	334
VT1811-08060202	plug	8-fold	OD8 (5/16")	87,5	-	68,5	-	60	55	65	-	-	6	334
VT1811-10020001	socket	10-fold	OD4 (5/32")	58,5	13,5	-	M38x1	50	-	-	41	46	2,5	112
VT1811-10020202	plug	10-fold	OD4 (5/32")	58,5	-	45	-	50	37	46	-	-	2,5	115
VT1811-10040001	socket	10-fold	OD6	73,5	16	-	M46x1	52	-	-	46	52	4	192
VT1811-10040202	plug	10-fold	OD6	63,5	-	57,5	-	58,8	46	56	-	-	4	201
VT1811-12020001	socket	12-fold	OD4 (5/32")	61,5	15,5	-	M42x1	47,8	-	-	46	50	2,5	147
VT1811-12020202	plug	12-fold	OD4 (5/32")	59,5	-	46	-	47,8	42	51,8	-	-	2,5	161
VT1811-12040001	socket	12-fold	OD6	73,5	16	-	M48x1	54	-	-	50	54	4	219
VT1811-12040202	plug	12-fold	OD6	76	-	60	-	54	48	60	-	-	4	220
VT1811-16020202	plug	16-fold	OD4 (5/32")	61,5	-	46	-		48	60	-	-	2,5	203

** on request

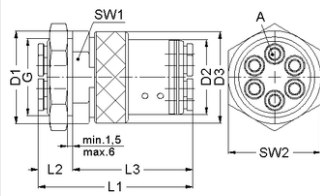
1811

1811 - Multiple couplings with shut-off

18

Aluminum natural anodized, brass nickel-plated

Multiple coupling | with shut-off on the socket side | vacuum version**



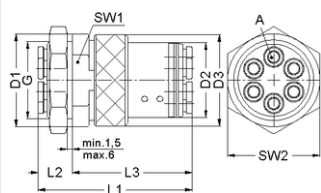
- Material: Aluminum natural anodized, brass nickel-plated
- Seal: FPM -20 bis 120 °C (-4 to 248 °F)
- Working pressure range: -0,8 bis 16 bar (-11,5 to 232 psi)
- Can be assembled as bulkhead
- Suitable for compressed air, vacuum

1811

Part no.	Assembly	Design	for tube	L1	L2	L3	G	D1	D2	D3	SW1	SW2	NW	g/piece
VT1811-04022001	socket	4-fold	OD4 (5/32")	58,5	13,5	-	M25x1	29,8	-	-	25	30	2,5	51
VT1811-04020002	plug	4-fold	OD4 (5/32")	58,5	-	45	-	-	26	34	-	-	2,5	56
VT1811-04042001	socket	4-fold	OD6	72	15,5	-	M30x1	35,8	-	-	30	36	4	89
VT1811-04040002	plug	4-fold	OD6	72	-	56,5	-	-	30	39,5	-	-	4	87
VT1811-04062001	socket	4-fold	OD8 (5/16")	87,5	19	-	M42x1	50	-	-	42	50	6	199
VT1811-04060002	plug	4-fold	OD8 (5/16")	87,5	-	68,5	-	-	42	53,8	-	-	6	194
VT1811-06022001	socket	6-fold	OD4 (5/32")	58,5	13,5	-	M30x1	35,8	-	-	32	36	2,5	75
VT1811-06020002	plug	6-fold	OD4 (5/32")	58,5	-	45	-	-	30	39,5	-	-	2,5	78
VT1811-06042001	socket	6-fold	OD6	72,5	16	-	M36x1	41,8	-	-	36	41	4	128
VT1811-06040002	plug	6-fold	OD6	72,5	-	56,5	-	-	36	46,5	-	-	4	123
VT1811-06062001	socket	6-fold	OD8 (5/16")	87,5	19	-	M50x1	56	-	-	50	56	6	277
VT1811-06060002	plug	6-fold	OD8 (5/16")	87,5	-	68,5	-	-	50	61	-	-	6	264
VT1811-08022001	socket	8-fold	OD4 (5/32")	58,5	13,5	-	M34x1	39,8	-	-	34	41	2,5	96
VT1811-08020002	plug	8-fold	OD4 (5/32")	58,5	-	45	-	-	34	41,5	-	-	2,5	90
VT1811-08042001	socket	8-fold	OD6	73	16	-	M40x1	45,8	-	-	41	46	4	155
VT1811-08040002	plug	8-fold	OD6	73	-	57	-	-	40	49	-	-	4	144
VT1811-08062001	socket	8-fold	OD8 (5/16")	87,5	19	-	M54x1	60	-	-	55	60	6	345
VT1811-08060002	plug	8-fold	OD8 (5/16")	87,5	-	68,5	-	-	55	64,8	-	-	6	309
VT1811-10022001	socket	10-fold	OD4 (5/32")	58,5	13,5	-	M38x1	50	-	-	41	46	2,5	119
VT1811-10020002	plug	10-fold	OD4 (5/32")	58,5	-	45	-	-	37	46	-	-	2,5	114
VT1811-10042001	socket	10-fold	OD6	63,5	16	-	M46x1	58,8	-	-	46	55	4	201
VT1811-10040002	plug	10-fold	OD6	73,5	-	57,5	-	-	46	56	-	-	4	195
VT1811-12022001	socket	12-fold	OD4 (5/32")	59,5	13,5	-	M42x1	47,8	-	-	46	50	2,5	153
VT1811-12020002	plug	12-fold	OD4 (5/32")	61,5	-	46	-	-	42	53,8	-	-	2,5	157
VT1811-12042001	socket	12-fold	OD6	76	16	-	M48x1	54	-	-	48	55	4	230
VT1811-12040002	plug	12-fold	OD6	73,5	-	57,5	-	-	48	60	-	-	4	214
VT1811-16022001	socket	16-fold	OD4 (5/32")	61,5	15,5	-	M48x1	54	-	-	46	54	2,5	197
VT1811-16020002	plug	16-fold	OD4 (5/32")	61,5	-	46	-	-	48	60	-	-	2,5	197

** on request

Multiple coupling | with shut-off on the both sides | vacuum version**



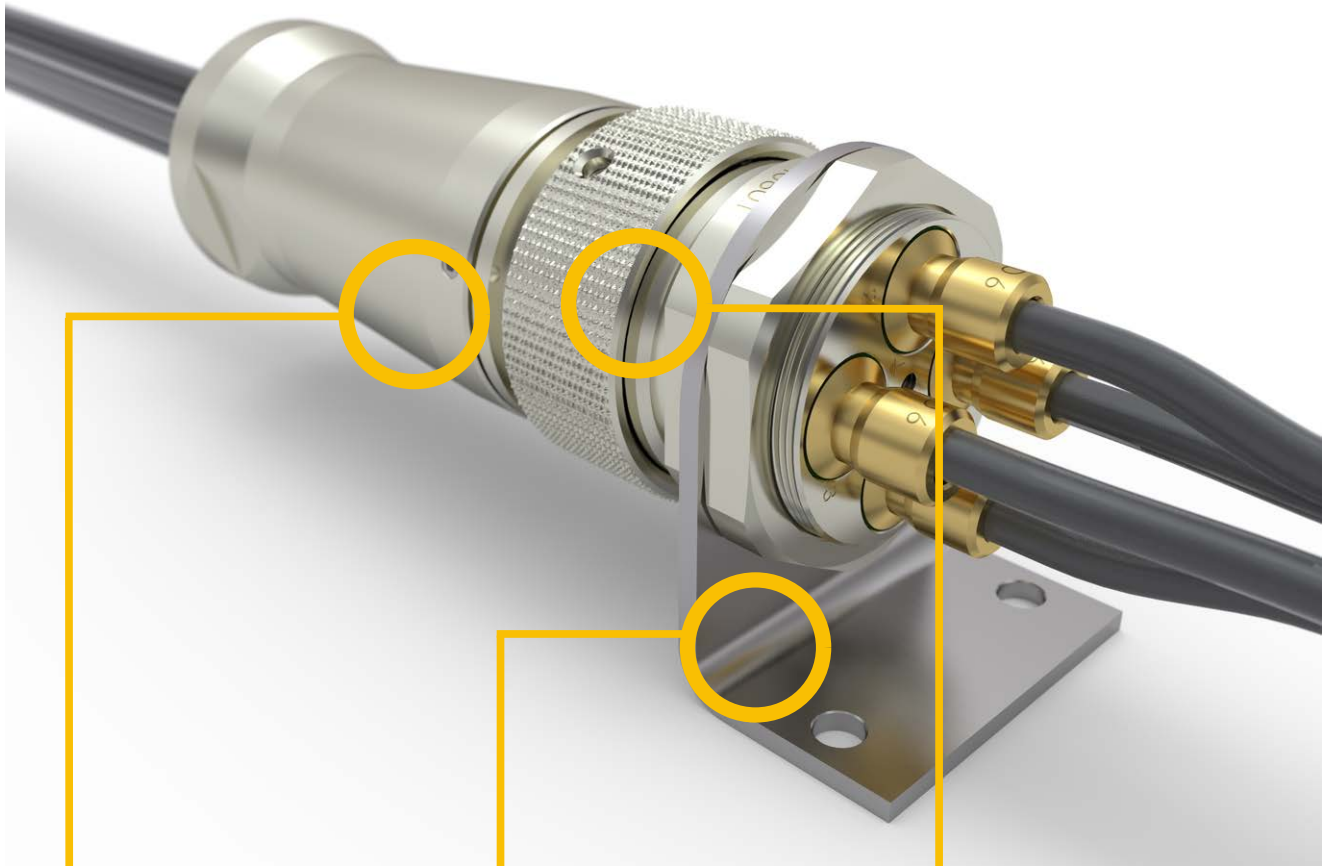
- Material: Aluminum natural anodized, brass nickel-plated
- Seal: FPM -20 bis 120 °C (-4 to 248 °F)
- Working pressure range: -0,8 bis 16 bar (-11,5 to 232 psi)
- Can be assembled as bulkhead
- Suitable for compressed air, vacuum

Part no.	Assembly	Design	for tube	L1	L2	L3	G	D1	D2	D3	SW1	SW2	NW	g/piece
VT1811-04022001	socket	4-fold	OD4 (5/32")	58,5	13,5	-	M25x1	29,8	-	-	25	30	2,5	51
VT1811-04020202	plug	4-fold	OD4 (5/32")	58,5	-	45	-	30	26	34	-	-	2,5	57
VT1811-04042001	socket	4-fold	OD6	72	15,5	-	M30x1	35,8	-	-	30	36	4	89
VT1811-04040202	plug	4-fold	OD6	72	-	56,5	-	35,8	30	39,5	-	-	4	89
VT1811-04062001	socket	4-fold	OD8 (5/16")	87,5	19	-	M42x1	50	-	-	42	50	6	199
VT1811-04060202	plug	4-fold	OD8 (5/16")	87,5	-	68,5	-	48	42	54	-	-	6	207
VT1811-06022001	socket	6-fold	OD4 (5/32")	58,5	13,5	-	M30x1	35,8	-	-	32	36	2,5	75
VT1811-06020202	plug	6-fold	OD4 (5/32")	58,5	-	45	-	36	30	39,5	-	-	2,5	80
VT1811-06042001	socket	6-fold	OD6	72,5	16	-	M36x1	41,8	-	-	36	41	4	128
VT1811-06040202	plug	6-fold	OD6	72,5	-	56,5	-	41,8	36	45	-	-	4	127
VT1811-06062001	socket	6-fold	OD8 (5/16")	87,5	19	-	M50x1	56	-	-	50	56	6	277
VT1811-06060202	plug	6-fold	OD8 (5/16")	87,5	-	68,5	-	56	50	60	-	-	6	283
VT1811-08022001	socket	8-fold	OD4 (5/32")	58,5	13,5	-	M34x1	39,8	-	-	34	41	2,5	96
VT1811-08020202	plug	8-fold	OD4 (5/32")	58,5	-	45	-	39,8	34	41,5	-	-	2,5	93
VT1811-08042001	socket	8-fold	OD6	73	16	-	M40x1	45,8	-	-	41	46	4	155
VT1811-08040202	plug	8-fold	OD6	73	-	57	-	45,8	40	49	-	-	4	149
VT1811-08062001	socket	8-fold	OD8 (5/16")	87,5	19	-	M54x1	60	-	-	55	60	6	345
VT1811-08060202	plug	8-fold	OD8 (5/16")	87,5	-	68,5	-	60	55	65	-	-	6	334
VT1811-10022001	socket	10-fold	OD4 (5/32")	58,5	13,5	-	M38x1	50	-	-	41	46	2,5	119
VT1811-10020202	plug	10-fold	OD4 (5/32")	58,5	-	45	-	50	37	46	-	-	2,5	115
VT1811-10042001	socket	10-fold	OD6	63,5	16	-	M46x1	58,8	-	-	46	55	4	201
VT1811-10040202	plug	10-fold	OD6	63,5	-	57,5	-	58,8	46	56	-	-	4	201
VT1811-12022001	socket	12-fold	OD4 (5/32")	59,5	13,5	-	M42x1	47,8	-	-	46	50	2,5	153
VT1811-12020202	plug	12-fold	OD4 (5/32")	59,5	-	46	-	47,8	42	51,8	-	-	2,5	161
VT1811-12042001	socket	12-fold	OD6	76	16	-	M48x1	54	-	-	48	55	4	230
VT1811-12040202	plug	12-fold	OD6	76	-	60	-	54	48	60	-	-	4	220
VT1811-16022001	socket	16-fold	OD4 (5/32")	61,5	15,5	-	M48x1	54	-	-	46	54	2,5	197
VT1811-16020202	plug	16-fold	OD4 (5/32")	61,5	-	46	-		48	60	-	-	2,5	203

** on request

1811

Accessories



Tube bundle

- Protects coupling from dirt
- No deviation of the tube
- Strain relief of the tubes

Angle brackets

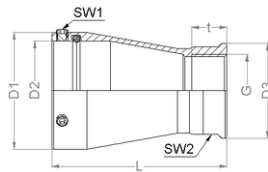
- Easy mounting to machines
- No special drilling necessary

Protection cap

- Prevents soiling in opened condition

ACC

Tube bundle for coupling plug series 1800 + 1811

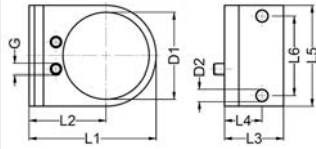


- Material: Aluminum natural anodized
- Seal: FKM -20 to 120 °C (-4 to 248 °F)
- Will be screwed on the coupling plug
- Diameter D2 tube bundle must be equal to diameter D1 coupling

Part no.	D2	G	SW1	SW2	L1	D1	D3	t	g/piece
VT1800-990123	23	M20x1,5	2	24	50	29,5	26	11	26
VT1800-990126	26	M20x1,5	2	24	50	32	26	10	25
VT1800-990129	29	M25x1,5	2	30	52	35	32,5	12	34
VT1800-990130	30	M25x1,5	2	30	52	36	32,5	12	34
VT1800-990134	34	M25x1,5	2	30	60	40	32,5	12	42
VT1800-990136	36	M32x1,5	2	36	67	42	40	14	56
VT1800-990137	37	M32x1,5	2	36	67	43	40	14	58
VT1800-990138	38	M32x1,5	2	36	67	44	40	14	60
VT1800-990140	40	M32x1,5	2	36	72	46	40	14	65
VT1800-990142	42	M40x1,5	2	42	80	48	48	15	82
VT1800-990146	46	M40x1,5	2	42	80	52	48	14	83
VT1800-990148	48	M40x1,5	2	42	80	55	48	15	83
VT1800-990150	50	M40x1,5	2	42	80	57	48	14	93
VT1800-990151	51	M40x1,5	2	42	80	58	48	14	98
VT1800-990155	55	M40x1,5	2	42	80	62	48	14	92
VT1800-990158	58	M50x1,5	2	55	82	65	60	15	143
VT1800-990165	65	M50x1,5	2	55	91	72	60	15	180
VT1800-990168	68	M63x1,5	2	67	91	75	75	15	189
VT1800-990170	70	M63x1,5	2	70	91	77	75	15	213
VT1800-990179	79	M65x1,5	2	-	90	88	75	20	245

ACC

Mounting bracket for coupling socket series 1800 + 1811

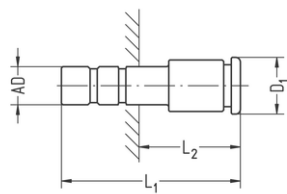


- Material: stainless steel 1.4301 (AISI 304)
- Diameter D1 fits to the thread G1 of the coupling socket

Part no.	for thread	D1	G	L1	L2	L3	L4	L5	L6	D2	g/piece
1811-9523	M23x1	23	M6	45	30,5	33	21	29	17	6,5	37
1811-9525	M25x1	25	M6	47	31	33	21	32	20	6,5	41
1811-9530	M30x1	30	M6	53	35	33	21	38	26	6,5	52
1811-9534	M34x1	34	M6	58	37	33	21	42	30	6,5	58
1811-9536	M36x1	36	M6	59	37	33	21	44	32	6,5	61
1811-9538	M38x1	38	M6	65	42	33	21	46	34	6,5	65
1811-9540	M40x1	40	M6	67	43	33	21	48	36	6,5	72
1811-9542	M42x1	42	M6	69	44	33	21	50	38	6,5	72
1811-9546	M46x1	46	M6	70	43	33	21	54	42	6,5	76
1811-9548	M48x1	48	M6	71	43	33	21	56	44	6,5	79
1811-9550	M50x1	50	M6	75	45	33	21	58	46	6,5	84
1811-9552	M52x1	52	-	80	49	33	21	61	49	6,5	93
1811-9554	M54x1	54	M6	83	51	33	21	64	52	6,5	101
1811-9560	M60x1	60	-	88	52	33	21	71	59	6,5	111
1811-9564	M64x1	64	-	93	55	33	21	75	63	6,5	121
1811-9570	M70x1	70	M6	101	60	33	21	80	68	6,5	133
1811-9580	M80x1	80	-	113	67	33	21	91	79	6,5	159

ACC

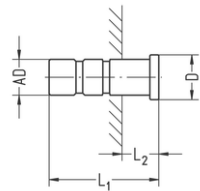
Reducing plug



- Material: brass nickel-plated
- Seal: NBR -20 to 80 °C (-4 to 176 °F)
- Working pressure range: -0.95 to 16 bar (-14 to 232 psi)
- Fits to all connections from the programs 14, 14A and 15 in the respective size as well as for all MULTILINE couplings

Part no.	plug AD	for tube	L1	L2	D1	NW	g/piece
821-0204	4	OD6	35,5	22	11,4	2	9
821-0206	4	OD8 (5/16")	37	23,5	14,6	2	13
821-0402	6	OD4 (5/32")	32,5	15,5	8,6	2	6
821-0406	6	OD8 (5/16")	39	22	14,6	4	14
821-0602	8	OD4 (5/32")	28	9,3	9,8	2	6
821-0604	8	OD6	38	16,3	11,4	4	10
821-0804	10	OD6	41,5	22,5	11,4	4	13
821-0806	10	OD8 (5/16")	43	22	14,6	6	16
821-0906	12	OD8 (5/16")	47,5	21,5	14,6	6	23
821-0908	12	OD10	53,5	27,5	16,6	8	30
821-1108	14	OD10	53	25	16,6	8	31
821-1109	14	OD12	61	33	19,9	9	48

Closure plug



- Material: brass nickel-plated
- Temperature range: -20 to +120 °C (4 to 248 °F)
- Working pressure range: -0.95 to 24 bar (-14 to 348 psi)
- Fits to all connections from the programs 14, 14A and 15 in the respective size as well as for all MULTILINE couplings

Part no.	plug AD	L1	L2	D	g/piece
623-1800	3	18,5	7	6	1
623-0200	4	19	7	5,5	2
623-4300	4,3	19	7	5,5	2
623-0300	5	21	7,5	6,8	4
623-0400	6	21,5	6,5	7,8	5
623-6300	1/4" (6,3)	21,5	6,5	8	6
623-0600	8	24,5	6,5	9,8	11
623-9500	3/8" (9,5)	28	7,5	11,3	17
623-0800	10	28	7,5	11,8	19
623-0900	12	33	7	13,8	32
623-2700	1/2" (12,7)	33	7	14,5	36
623-1100	14	36	7,5	15,8	30
623-1200	16	38	7,5	17,8	38
623-1500	20	52	-	21,8	69

Coding pins



- Material: Aluminum anodized
- Compatible with all multiple couplings of the 1811 series
- For color and mechanical coding
- 4 coding pins available
- Easy assembly with assembly tool 1811-9800
- Packaging unit: 2 pieces (1x for socket; 1x for plug)

Part no.	article description	Color	Marking	g/piece
1811-9810	coding pins (2 pcs)	natural	1	2
1811-9820	coding pins (2 pcs)	black	2	2
1811-9830	coding pins (2 pcs)	blue	3	2
1811-9840	coding pins (2 pcs)	red	4	2
1811-9814	coding pin set 1-4 (2 pcs)	various	No. 1-4	2

Installation tool



- Material: aluminum natural anodized
- Compatible with all coding pins for series 1811
- For easy assembly

Part no.	article description	g/piece
1811-9800	installation tool, for easy assembling	4

ACC

EISELE MULTILINE 1800 | 1811

Protection cap for 1800 + 1811



- Material: polyethylene (PE)
- protection caps compatible with socket and plug of the MULTILINE

Part no.	suitable for plug or socket 1800	suitable for plug or socket 1811
1800-97385	-	VT1811-1002XX02
1800-97455	-	VT1811-0804XX01
1800-97479	-	VT1811-0406XX01
1800-97505	-	VT1811-1004XX02
1800-97545	-	VT1811-0606XX02
1800-97585	-	VT1811-1004XX01
1800-97613	-	-
1800-97679	-	-
1800-97728	-	-
1800-97740	-	-
1800-97775	-	-
1800-97815	-	-
1800-97243	VT1800-040202	-
1800-97272	VT1800-040201	VT1811-0402XX02
1800-97300	VT1800-060202 VT1800-080202 VT1800-040402	VT1811-0402XX01 VT1811-0404XX02
1800-97320	-	VT1811-0602XX02
1800-97336	VT1800-040401 VT1800-060201 VT1800-080201 VT1800-040602 VT1800-080402 VT1800-120202	VT1811-0802XX02
1800-97345	VT1800-040602 VT1800-060402 VT1800-080402 VT1800-100202 VT1800-120202	-
1800-97355	-	VT1811-0404XX01 VT1811-0602XX01
1800-97379	-	VT1811-0802XX01
1800-97413	VT1800-040601 VT1800-060401 VT1800-080401 VT1800-100201 VT1800-120201	VT1811-0604XX02 VT1811-0804XX02
1800-97439	-	VT1811-0406XX02 VT1811-0604XX01 VT1811-1002XX02 VT1811-1202XX02

ACC

Part no.	suitable for plug or socket 1800	suitable for plug or socket 1811
1800-97498	VT1800-060602 VT1800-080602 VT1800-100402 VT1800-120402	VT1811-1202XX01 VT1811-1204XX02
1800-97525	VT1800-060601 VT1800-080601 VT1800-100401 VT1800-120401	-
1800-97555	-	VT1811-1204XX01
1800-97570	VT1800-120602	VT1811-0606XX01 VT1811-0806XX02
1800-97605	-	VT1811-0806XX01
1800-97635	VT1800-100601 VT1800-120601	-

Replacement O-rings for series 1800



- Material: FKM
- Temperature range depending on type of coupling (s. coupling)
- Packaging unit 100 pieces

Part no.	Information
9002-02540178-100	suitable for VT1800-xx02
9002-04000200-100	suitable for VT1800-xx04
9002-06000200-100	suitable for VT1800-xx06
9002-10000200-100	suitable for VT1800-xx09

ACC

Customized connection solutions

Multiple coupling

Coupling with spigot connections, diameter variable. The special coating makes the coupling resistant to the cleaning agent used. Larger coupling diameters available by request.



Multiple coupling

Series 1800 coupling, different diameters. Material nickel-plated brass.



Multiple coupling

1810 series coupling, customer specific material: nickel-plated brass.



CLIENT

Multiple couplings with connections set at an angle

Space-saving customer solution with connections set at an angle.



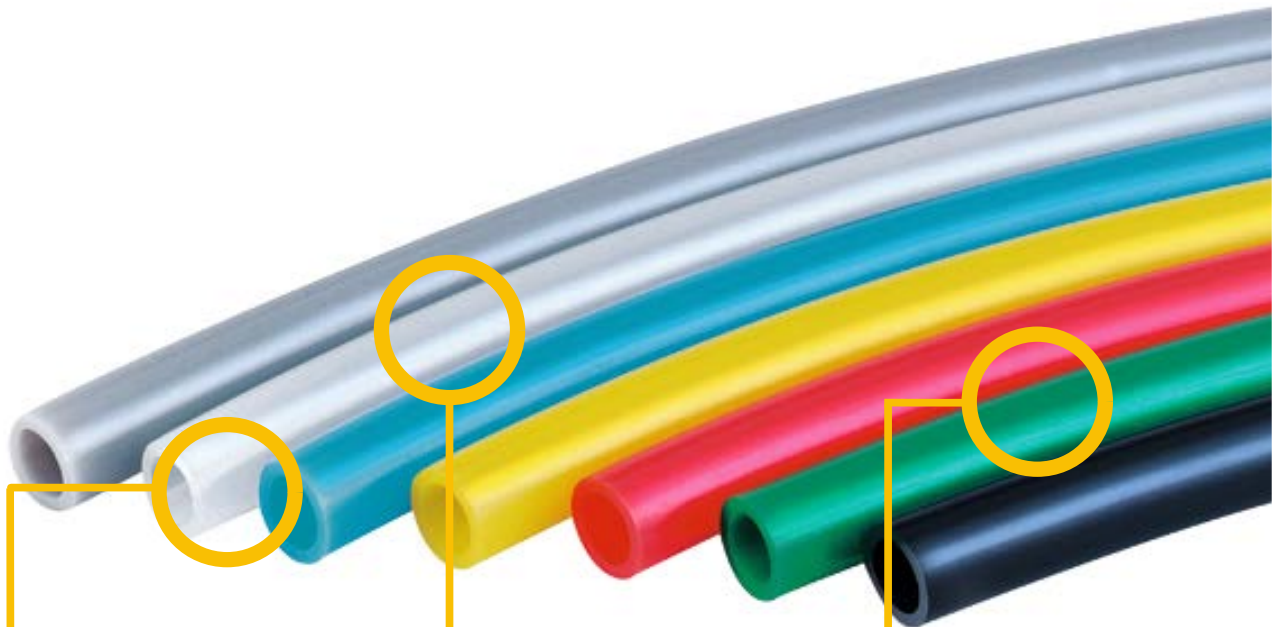
Multiple coupling made of stainless steel

Customer-specific coupling from grade AISI 304 (1.4301) stainless steel. This custom, food grade solution permits semi-automatic coupling at the machine.



EISELE MULTILINE 1800 | 1811

Plastic tubes



Versatile range of tubes

- Standard compressed-air tubes as well as tubes for special applications and appropriate accessories
- Different tube materials for different application areas

Color and code versions possible

- Tubes can be delivered in many common colors, e.g. to indicate different fluids
- Labeling of tubes for coding is also possible

Package solutions of connectors and tubes

- Secure combinations of EISELE connectors and their matching tubes
- **Very suitable for applications due to limited tolerances and a high demand for no leakage**

On request we also offer tube solutions in other colors, sizes and materials.

Tube types

Kind of calibration:

- Tubes for push-in fittings - external calibration, OD produced with narrow tolerances. Typical structure: single-layered, not reinforced with fabric lining.
- Tubes for spigots – internal calibration. Partly reinforced.

Kind of flexibility:

- Furthermore, a distinction is made between tubes which are resistant and nonresistant to buckling. Polyurethane tubes (e.g. PU, HYDRO Eisele, Eisele ProWeld) or PVC tubes are permanently flexible and relatively impervious to buckling! All other tubes have a clearly visible deformation (e.g. whitening) after buckling; replacement should be done.

Resistance

Tube types	Damage by weak acids/bases or water	Stress crack by polar solvents	Microbial/fungal damage	Physical radiation damage
Polyurethane (PU)	-	0	-	+*
Eisele Hydro/ProWeld	+	0	++	+
Polyamide (PA)	0/+	+	+	0
PFA	++	++	++	(UV) +

++ Excluded damage
 + Damage rarely
 0 Damage occasionally
 - Damage often

*PU bilged stronger than Eisele Hydro

Temperatures

Temperature - Material



302 °F (150°C) - PFA, PTFE (Teflon) at zero pressure up to 500 °F (260°C)
 248 °F (120°C) - FEP
 212 °F (100°C) - PA
 194 °F (90°C) - PU-Ether-based (Eisele ProWeld)
 158 °F (70°C) - PU-Ester-based (PU), NBR
 140 °F (60°C) - PE, PVC, PU-Ether-based (Eisele Hydro)
 104 °F (40°C) - PE

Working pressure

The operating pressure is obtained by dividing the burst pressure by a safety factor. Safety factors are between 2 to 4 depending on the application.

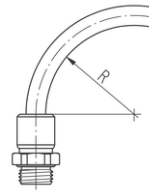
Example:

435 psi (30 bar) burst pressure at 20 ° C results in an operating pressure of
 - 145 psi (10 bar) with a safety factor of 3,
 - 217 psi (15 bar) with a safety factor of 2

Eisele usually provides the burst pressure. Every customer can choose his required safety factor.

Plastic tube PE

- Made of polyethylene (PE)
- Color black (red, blue, green, yellow, natural, brown, orange and grey: specify when placing order; subject to extra charge)
- External calibration; for use with Eisele plug connectors
- Temperature range: 14 to 104°F (-10 to +40 °C)
- Free of plasticizer and halogen

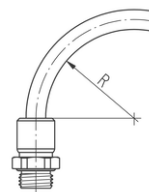


Part no.*	Outside Ø / Inside Ø	Maximum allowable working pressure at 73°F (23°C) (reference value)	min. allowable bend radius	g/m
99004-0402	4 / 2	20 bar (290,1 psi)	20	8,7
99004-4303	4,3 / 3	13 bar (188,5 psi)	20	6,9
99004-0503	5 / 3	15 bar (217,6 psi)	25	11,6
99004-0604	6 / 4	13 bar (188,5 psi)	30	14,5
99004-0806	8 / 6	8 bar (116 psi)	40	20,3
99004-1008	10 / 8	6 bar (87 psi)	60	26
99004-1209	12 / 9	9 bar (130,5 psi)	60	45,6
99004-1210	12 / 10	5 bar (72,5 psi)	85	31,9
99004-1411	14 / 11	8 bar (116 psi)	90	54,3
99004-1512	15 / 12	7 bar (101,5 psi)	90	58,7
99004-1613	16 / 13	6 bar (87 psi)	90	63

* Please add the desired tube color directly behind the part no.: 99XXX-XXXXCOLOUR – e.g. 99004-0402RED

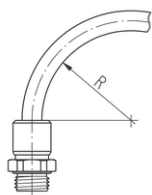
Plastic tube PA

- Made of polyamide (PA)
- Color black (red, blue, green, yellow, natural, brown, orange and grey: specify when placing order; subject to extra charge)
- External calibration; for use with Eisele plug connectors
- Temperature range: -76 to 212 °F (-60 to +100 °C)
- Suitable for vacuum
- Free of PWIS and halogen
- Suitable for fuel
- For automotive industry according to DIN 73378
- Drag chain compliant



Part no.	Outside Ø / Inside Ø	Minimum burst pressure at 68°F (20°C)	Minimum burst pressure at 140°F (60°C)	min. allowable bend radius	g/m
99005-0302	3 / 1,7	105 bar (1522,9 psi)	-	20	4,9
99005-0402	4 / 2	145 bar (2103 psi)	82 bar (1189,3 psi)	20	9,7
99005-4303	4,3 / 3	76 bar (1102,3 psi)	43 bar (623,7 psi)	20	7,7
99005-0503	5 / 3	112 bar (1624,4 psi)	64 bar (928,2 psi)	25	12,9
99005-0604	6 / 4	89 bar (1290,8 psi)	51 bar (739,7 psi)	30	16,2
99005-0805	8 / 5	93 bar (1348,9 psi)	53 bar (768,7 psi)	40	31,5
99005-0806	8 / 6	63 bar (913,7 psi)	36 bar (522,1 psi)	40	22,7
99005-0906	9 / 6	89 bar (1290,8 psi)	51 bar (739,7 psi)	45	36,1
99005-1008	10 / 8	49,5 bar (717,9 psi)	28 bar (406,1 psi)	60	29,1
99005-1209	12 / 9	63 bar (913,7 psi)	36 bar (522,1 psi)	60	51
99005-1210	12 / 10	39,5 bar (572,9 psi)	22,5 bar (326,3 psi)	85	35,6
99005-1411	14 / 11	53 bar (768,7 psi)	30 bar (435,1 psi)	80	60,7
99005-1512	15 / 12	49,5 bar (717,9 psi)	28 bar (406,1 psi)	90	65,5
99005-1613	16 / 13	46 bar (667,2 psi)	26 bar (377,1 psi)	90	70,4
99005-1814	18 / 14	51 bar (739,7 psi)	29 bar (420,6 psi)	100	103,5
99005-2016	20 / 16	49 bar (710,7 psi)	28 bar (406,1 psi)	120	116,5

Plastic tube PU

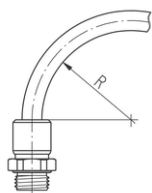


- Made of polyester-polyurethane (PU)
- Color black (red, blue, green, yellow, natural, brown, orange and grey: specify when placing order; subject to extra charge)
- External calibration; for use with Eisele plug connectors
- Temperature range: -31 to 158 °F (-35 to +70 °C)
- Free of plasticizers, PWIS, copper and PTFE
- Impervious to buckling and drag chain compliant
- Suitable for vacuum

Artikel-Nr.*	Outside Ø / Inside Ø	Minimum burst pressure at 68°F (20°C)	Minimum burst pressure at 140°F (60°C)	min. allowable bend radius	g/m
99003-0402	4 / 2,3	45 bar (652,7 psi)	24 bar (348,1 psi)	10	10
99003-0425	4 / 2,5	39 bar (565,6 psi)	23 bar (333,6 psi)	13	10
99003-4303	4,3 / 2,9	36 bar (522,1 psi)	22 bar (319,1 psi)	14	10
99003-0503	5 / 3,1	45 bar (652,7 psi)	23 bar (333,6 psi)	12	16
99003-0604	6 / 3,9	36 bar (522,1 psi)	23 bar (333,6 psi)	20	22
99003-0806	8 / 5,7	32 bar (464,1 psi)	20 bar (290,1 psi)	35	32
99003-1008	10 / 7,5	28 bar (406,1 psi)	16 bar (232,1 psi)	50	42
99003-1208	12 / 8	42 bar (609,2 psi)	26 bar (377,1 psi)	50	78
99003-1209	12 / 9	29 bar (420,6 psi)	17 bar (246,6 psi)	55	62
99003-1411	14 / 11	23 bar (333,6 psi)	15 bar (217,6 psi)	70	75
99003-1611	16 / 11	32 bar (464,1 psi)	21 bar (304,6 psi)	70	132

* Please add the desired tube color directly behind the part no.: 99XXX-XXXXCOLOUR – e.g. 99003-0402RED

Plastic tube Eisele Hydro

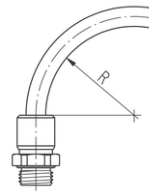


- Made of polyether-polyurethane (PU-H)
- Color imbued: black, blue, red
- External calibration; for use with Eisele plug connectors
- Temperature range: -31 to 140 °F (-35 to +60 °C)
- Free of halogen, plasticizers, PWIS, copper and PTFE
- Impervious to buckling and drag chain compliant
- Resistant to UV, hydrolysis and microbes
- FDA compliant according to 21 CFR 177.2600
- Suitable for vacuum

Part no.	Outside Ø / Inside Ø	Minimum burst pressure at 68°F (20°C)	Minimum burst pressure at 140°F (60°C)	min. allowable bend radius	g/m
99150-0425	4 / 2,5	33 bar (478,6 psi)	16 bar (232,1 psi)	10	8,5
99150-3925	5/32" (4/2,5)	33 bar (478,6 psi)	16 bar (232,1 psi)	10	8,5
99150-0604	6 / 4	32 bar (464,1 psi)	15 bar (217,6 psi)	10	18,3
99150-6341	1/4" (6,35/4,1)	32 bar (464,1 psi)	15,5 bar (224,8 psi)	10	22
99150-0806	8 / 6	27 bar (391,6 psi)	13 bar (188,5 psi)	21	28,7
99150-7906	5/16" (8/6)	27 bar (391,6 psi)	13 bar (188,5 psi)	21	28,7
99150-9565	3/8" (9,53/6,5)	28 bar (406,1 psi)	13,5 bar (195,8 psi)	25	46
99150-1007	10 / 7	28 bar (406,1 psi)	13 bar (188,5 psi)	28	46,5
99150-1208	12 / 8	32 bar (464,1 psi)	16 bar (232,1 psi)	33	72,9
99150-2785	1/2" (12,7/8,5)	29 bar (420,6 psi)	15,5 bar (224,8 psi)	23	84
99150-1410	14 / 10	27,1 bar (393,1 psi)	13,2 bar (191,4 psi)	33	72,9
99150-5908	5/8" (15,9/10,8)	30 bar (435,1 psi)	14,5 bar (210,3 psi)	38	133
99150-1611	16 / 11	30 bar (435,1 psi)	14 bar (203,1 psi)	38	123
99150-2014	20 / 14	28,8 bar (417,7 psi)	14 bar (203,1 psi)	-	ca. 187

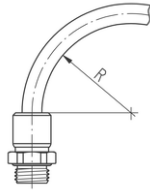
Plastic tube Eisele Hydro | translucent

- Made of polyether-polyurethane (PU-H)
- Color transparent: natural, red, blue
- External calibration; for use with Eisele plug connectors
- Temperature range -31 to 140 °F (-35 to +60 °C)
- Free of halogen, plasticizers, PWIS, copper and PTFE
- Impervious to buckling and drag chain compliant
- Resistant to hydrolysis and microbes
- FDA compliant according to 21 CFR 177.2600
- Suitable for vacuum



Part no.	Outside Ø / Inside Ø	Minimum burst pressure at 68°F (20°C)	Minimum burst pressure at 140°F (60°C)	min. allowable bend radius	g/m
99151-0425	4 / 2,5	33 bar (478,6 psi)	16 bar (232,1 psi)	10	8,5
99151-3925	5/32" (4/2,5)	33 bar (478,6 psi)	16 bar (232,1 psi)	10	8,5
99151-0604	6 / 4	32 bar (464,1 psi)	15 bar (217,6 psi)	10	18,3
99151-6341	1/4" (6,35/4,1)	32 bar (464,1 psi)	15,5 bar (224,8 psi)	10	22
99151-0806	8 / 6	27 bar (391,6 psi)	13 bar (188,5 psi)	21	28,7
99151-7906	5/16" (8/6)	27 bar (391,6 psi)	13 bar (188,5 psi)	21	28,7
99151-9565	3/8" (9,53/6,5)	28 bar (406,1 psi)	13,5 bar (195,8 psi)	25	46
99151-1007	10 / 7	28 bar (406,1 psi)	13 bar (188,5 psi)	28	46,5
99151-1208	12 / 8	32 bar (464,1 psi)	16 bar (232,1 psi)	33	72,9
99151-2785	1/2" (12,7/8,5)	29 bar (420,6 psi)	15,5 bar (224,8 psi)	23	84
99151-1410	14 / 10	27,1 bar (393,1 psi)	13,2 bar (191,4 psi)	33	72,9
99151-5908	5/8" (15,9/10,8)	30 bar (435,1 psi)	14,5 bar (210,3 psi)	38	133
99151-1611	16 / 11	30 bar (435,1 psi)	14 bar (203,1 psi)	38	123
99151-2014	20 / 14	28,8 bar (417,7 psi)	14 bar (203,1 psi)	-	ca. 187

Plastic tube Eisele ProWeld



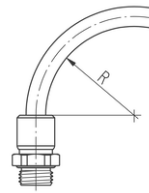
- Made of polyether-polyurethane
- Color black (red, blue, green, white)
- External calibration; for use with Eisele plug connectors
- Operating temperature: -31 to 194 °F (-35 to +90 °C)
- Suitable for compressed air, water
- Free of plasticizers, PWIS, halogen, copper and PTFE
- Impervious to buckling and drag chain compliant
- Resistant to UV, hydrolysis and microbes
- Flame-retardant according to UL94 V0 to V2
- Suitable for employment in welding
- Suitable for vacuum

Artikel-Nr.*	Outside Ø / Inside Ø	Minimum burst pressure at 68°F (20°C)	Minimum burst pressure at 140°F (60°C)	min. allowable bend radius	g/m
99118-0201	2 / 1	35 bar (507,6 psi)	-	-	-
99118-0302	3 / 2	45 bar (652,7 psi)	-	-	-
99118-0402	4 / 2	57 bar (826,7 psi)	40 bar (580,2 psi)	6,5	12,2
99118-3902	5/32" (4/2)	57 bar (826,7 psi)	40 bar (580,2 psi)	10	12,2
99118-4303	4,3/3	38 bar (551,1 psi)	-	-	-
99118-0603	6 / 3	57 bar (826,7 psi)	40 bar (580,2 psi)	8,5	27,5
99118-0604	6 / 4	40 bar (580,2 psi)	22 bar (319,1 psi)	12	22
99118-6343	1/4" (6,35/4,32)	41 bar (594,7 psi)	-	-	-
99118-0804	8 / 4	63 bar (913,7 psi)	37 bar (536,6 psi)	10	48,3
99118-7904	5/16" (8/4)	63 bar (913,7 psi)	37 bar (536,6 psi)	10	48,3
99118-0855	8 / 5,5	34 bar (493,1 psi)	18 bar (261,1 psi)	18	32,5
99118-7955	5/16" (8/5,5)	34 bar (493,1 psi)	18 bar (261,1 psi)	21	32,5
99118-9563	3/8" (9,53/6,35)	43 bar (623,7 psi)	-	-	-
99118-1006	10 / 6	49 bar (710,7 psi)	28 bar (406,1 psi)	15	64,5
99118-1208	12 / 8	34 bar (493,1 psi)	21 bar (304,6 psi)	24	80,8
99118-2781	1/2" (12,7/8,13)	47 bar (681,7 psi)	-	-	-
99118-1410	14 / 10	33 bar (478,6 psi)	18 bar (261,1 psi)	38	97,8
99118-1611	16 / 11	37 bar (536,6 psi)	19 bar (275,6 psi)	44	136,9
99118-2014	20 / 14	35 bar (507,6 psi)	ca. 16 bar (232,1 psi)	70	ca. 200

* Please add the desired tube color directly behind the part no.: 99XXX-XXXXCOLOUR – e.g. 99118-0402RED

Plastic tube PTFE

- Made of polytetrafluoroethylene (PTFE, Teflon)
- Color natural
- External calibration; for use with Eisele plug connectors
- Temperature range: -310 to 500 °F (-190 to +260 °C)
- Free of plasticizers, PWIS and copper
- Resistant to UV and solvents
- FDA compliant according to 21 CFR 177.2600
- Flame-retardant according to UL94 V0 to V2

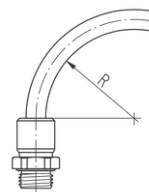


Part no.	Outside Ø / Inside Ø	Minimum burst pressure at 68°F (20°C)	Minimum burst pressure at 122°F (50°C)	min. allowable bend radius	g/m
99001-0335	3 / 0,35	20 bar (290,1 psi)	17,5 bar (253,8 psi)	35	-
99001-0305	3 / 0,5	-	-	-	-
99001-0307	3 / 0,7	-	-	-	-
99001-0310	3 / 1	-	-	-	-
99001-0315	3 / 1,5	15 bar (217,6 psi)	13 bar (188,5 psi)	25	-
99001-0402	4 / 2	80 bar (1160,3 psi)	69 bar (1000,8 psi)	16	20,3
99001-4303	4,3 / 3	36 bar (522,1 psi)	21 bar (304,6 psi)	35	16,1
99001-0503	5 / 3	60 bar (870,2 psi)	52 bar (754,2 psi)	25	27,1
99001-0604	6 / 4	48 bar (696,2 psi)	31 bar (449,6 psi)	35	33,8
99001-0805	8 / 5	56 bar (812,2 psi)	48 bar (696,2 psi)	-	-
99001-0806	8 / 6	36 bar (522,1 psi)	31 bar (449,6 psi)	65	47,3
99001-0906	9 / 6	48 bar (696,2 psi)	31 bar (449,6 psi)	55	76
99001-1008	10 / 8	28 bar (406,1 psi)	24 bar (348,1 psi)	100	60,8
99001-1209	12 / 9	40 bar (580,2 psi)	34 bar (493,1 psi)	100	106,4
99001-1210	12 / 10	21 bar (304,6 psi)	18 bar (261,1 psi)	100	-
99001-1411	14 / 11	28 bar (406,1 psi)	18 bar (261,1 psi)	140	126,7
99001-1613	16 / 13	24 bar (348,1 psi)	21 bar (304,6 psi)	175	152

99

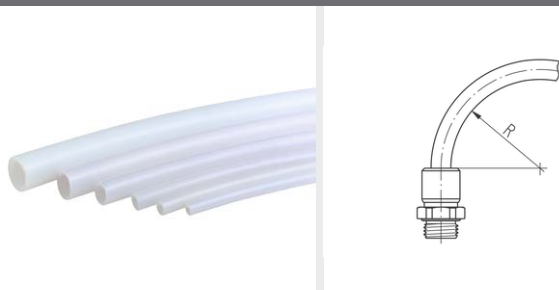
Plastic tube FEP

- Made of fluorinated ethylene-propylene copolymer (FEP)
- Color natural, transparent
- External calibration; for use with Eisele plug connectors
- Temperature range: -31 to 248 °F (-35 to +120 °C)
- Very flexible
- Free of plasticizer and copper
- Flame-retardant according to UL94 V0 to V2
- Resistant to UV, hydrolysis and microbes
- Stabilized against thermal degradation and light
- FDA compliant according to 21 CFR 177.2600
- Suitable for vacuum



Part no.	Outside Ø / Inside Ø	Minimum burst pressure at 68°F (20°C)	Minimum burst pressure at 140°F (60°C)	min. allowable bend radius	g/m
99501-0402	4 / 2	84 bar (1218,3 psi)	70 bar (1015,3 psi)	25	21
99501-0503	5 / 3	60 bar (870,2 psi)	52 bar (754,2 psi)	35	28
99501-0604	6 / 4	50 bar (725,2 psi)	40 bar (580,2 psi)	40	35
99501-0806	8 / 6	36 bar (522,1 psi)	29 bar (420,6 psi)	65	49
99501-0906	9 / 6	-	-	55	79
99501-1008	10 / 8	28 bar (406,1 psi)	22 bar (319,1 psi)	100	63
99501-1209	12 / 9	-	-	100	110

Plastic tube PFA



- Made of Perfluoro Alkoxyalkane (PFA)
- Color natural
- External calibration; for use with Eisele plug connectors
- Temperature range: -4 to 302 °F (-20 to +150 °C)
- Free of plasticizer and PWIS
- Resistant to UV, hydrolysis, microbes and solvents
- Stable against thermal degradation
- Resistant to weld spatter
- FDA compliant according to 21 CFR 177.2600
- Suitable for vacuum

Part no.	Outside Ø / Inside Ø	Minimum burst pressure at 68°F (20°C)	Minimum burst pressure at 140°F (60°C)	min. allowable bend radius	g/m
99221-0425	4 / 2,5	61 bar (884,7 psi)	50 bar (725,2 psi)	25	12
99221-3925	5/32" (4/2,5)	61 bar (884,7 psi)	50 bar (725,2 psi)	25	12
99221-0403	4 / 3	41 bar (594,7 psi)	34 bar (493,1 psi)	35	12
99221-0604	6 / 4	54 bar (783,2 psi)	44 bar (638,2 psi)	40	34
99221-6339	1/4" (6,35/3,9)	61 bar (884,7 psi)	50 bar (725,2 psi)	40	34
99221-0806	8 / 6	41 bar (594,7 psi)	34 bar (493,1 psi)	70	49
99221-7906	5/16 (8/6)	41 bar (594,7 psi)	34 bar (493,1 psi)	70	49
99221-0906	9 / 6	54 bar (783,2 psi)	44 bar (638,2 psi)	65	49
99221-9563	3/8" (9,53/6,38)	53 bar (768,7 psi)	42 bar (609,2 psi)	65	49
99221-1007	10 / 7	59 bar (855,7 psi)	40 bar (580,2 psi)	75	87
99221-1209	12 / 9	41 bar (594,7 psi)	34 bar (493,1 psi)	100	125
99221-1210	12 / 10	27 bar (391,6 psi)	22 bar (319,1 psi)	150	-
99221-1412	14 / 12	23 bar (333,6 psi)	17 bar (246,6 psi)	-	-
99221-1614	16 / 14	20 bar (290,1 psi)	15 bar (217,6 psi)	-	-
99221-2795	1/2" (12,7/8,5)	40 bar (580,2 psi)	33 bar (478,6 psi)	110	125

99

Plastic tube PVDF



- Made of Polyvinylidene fluoride (PVDF)
- Color natural
- External calibration; for use with Eisele plug connectors
- Temperature range: -40 to +150 °C (-40 to 302 °F)
- Resistant to UV
- Non flammable (according to UL94 V-0)
- Resistant to a wide range of chemicals
- Low gas permeability

Artikel-Nr.*	Outside Ø* / Inside Ø	Maximum allowable working pressure at 73°F (23°C) (reference value)	min. allowable bend radius	g/m
99401-0402	4 / 2	166 bar (2407,6 psi)	60	17
99401-0604	6 / 4	100 bar (1450,4 psi)	75	28
99401-0806	8 / 6	71 bar (1029,8 psi)	85	39
99401-1008	10 / 8	55 bar (797,7 psi)	100	50
99401-1210	12 / 10	45 bar (652,7 psi)	125	62

Tube cutter

- For compressed-air tubes with outer- \varnothing 14 mm
- Material plastic black / steel
- Packaging unit 1 piece



Part no.		g/piece
99605-0014	Tube cutter for outer diameter up to 14	30
99605-00149	Spare blade for outer diameter up to 14	1

Tube cutter

- For compressed-air tubes with outer- \varnothing 22 mm
- Material zinc die-casting / steel
- Packaging unit 1 piece



Part no.		g/piece
99606-0022	Tube cutter for outer diameter up to 22 (with bag)	240
99606-00229	Spare blade for outer diameter up to 22	2

Technical information



Material properties - Aluminum natural anodized

What are the benefits of using anodized aluminum?

Due to an electrochemical process, an anodic oxide layer is formed on aluminum. This layer is formed out of the existing aluminum and it is firmly bound to the aluminum. The thickness of the layer is influencing the wear resistance and the corrosion resistance of the material. In addition to a colorless (natural) layer, color anodizing can also be used to code the parts and to avoid mistakes.

Areas of application

Eisele uses natural anodized aluminum for the production of multiple couplings which have to withstand strong temperature fluctuations (-20 to +120 °C / -4 F to 248 F). Surfaces have to be functional and presentable for several years. As a result optimal material conditions for demanding applications in machine and plant engineering are given.

The experts at Eisele will be glad to assist you in selecting suitable adaptive insets.



Technical additional information

Materials

Eisele manufactures and supplies in accordance to the directives 2011/65 / EU (RoHS). Possible exceptions are marked on our documents (order confirmation, delivery note, invoice).

Europe		USA		Japan
EN		AISI	ASTM (UNS)	JIS
No. / Name	Short name			
1.4301	X5CrNi18-10	304	S 30400	SUS 304
1.4305	X8CrNiS18-9	303	S 30300	SUS 303
1.4310	X10CrNi18-8	301	S 30100	SUS 301
1.4404	X2CrNiMo17-12-2	316 L	S 31603	SUS 316L
1.4571	X6CrNiMoTi17-12-2	316 Ti	S 31635	SUS 316Ti
AW-2007	AlCu4PbMgMn	-	-	-
AW-2011	AlCu6BiPb	-	-	-
AW-6082	AlSi1MgMn	-	-	-
AA 2015	AlCuMgSn	-	-	-
CW602N	CuZn36Pb2As	-	C35330	-
CW614N	CuZn39Pb3	-	C38500	C3603
CW724R	CuZn21Si3P	-	C69300	-

Notice:

Some of the metal materials we use according to EN can only be compared approximately with the other material standards (USA, Japan).

The interchangeability of the compared materials must be considered on a case-by-case basis.

Relative pressure

In the catalogue bar is used as the unit for the working pressure range.

bar	Pa	psi
-0,95	-0,95 x 10 ⁵	-13,8
-0,8	-0,8 x 10 ⁵	-11,6
0	0 x 10 ⁵	0,0
0,5	0,5 x 10 ⁵	7,3
1	1 x 10 ⁵	14,5
6	6 x 10 ⁵	87,0
10	10 x 10 ⁵	145,0
15	15 x 10 ⁵	217,6
16	16 x 10 ⁵	232,1
24	24 x 10 ⁵	348,1
25	25 x 10 ⁵	362,6
30	30 x 10 ⁵	435,1

Temperature

In the catalogue °C is used as the unit for the working temperature range.

°C	°F
-60	-76
-40	-40
-20	-4
0	32
20	68
40	104
60	140
80	176
100	212
120	248
200	392
250	482

Dimension

All information about lengths and diameters in the catalog are given in millimeters (mm). Based on the following data a conversion can be done

1 mm = 0,04 Zoll (Inch)
25,4 mm = 1 Zoll (Inch)

Reservation: The validity of these general information cannot be guaranteed.

Type designation	Page
C	
Closure plug	24
M	
Multiple coupling with shut-off on the plug side	14,16
Multiple coupling with shut-off on the plug side vacuum version	17,19
Multiple coupling with shut-off on the socket side	15-16
Multiple coupling with shut-off on the socket side vacuum version	18-19
Multiple coupling without shut-off	9-10,13-15,17-18
O	
O-Ring	27
P	
Plastic tube Eisele Hydro	34-35
Plastic tube Eisele ProWeld	36
Plastic tube FEP	37
Plastic tube PA	33
Plastic tube PE	33
Plastic tube PFA	38
Plastic tube PTFE	37
Plastic tube PU	34
Plastic tube PVDF	38
R	
Reducing plug	23
T	
Tube cutter	39

Article No.	Page	Article No.	Page	Article No.	Page
VT1800-040201	9	VT1800-990165	22	VT1811-12020001	13-14,17
VT1800-040202	9	VT1800-990168	22	VT1811-12020002	13,15,18
VT1800-040401	9	VT1800-990170	22	VT1811-12020202	17,19
VT1800-040402	9	VT1800-990179	22	VT1811-12021001	15-16
VT1800-040601	9	VT1811-04020001	13-14,17	VT1811-12022001	18-19
VT1800-040602	9	VT1811-04020002	13,15,18	VT1811-12040001	13-14,17
VT1800-040901	9	VT1811-04020102	14,16	VT1811-12040002	13,15,18
VT1800-040902	9	VT1811-04020202	17,19	VT1811-12041001	15-16
VT1800-060201	9	VT1811-04021001	15-16	VT1811-12040102	14,16
VT1800-060202	9	VT1811-04022001	18-19	VT1811-12040202	17,19
VT1800-060401	9	VT1811-04040001	13-14,17	VT1811-12042001	18-19
VT1800-060402	9	VT1811-04040002	13,15,18	VT1811-16020001	13-14
VT1800-060601	9	VT1811-04040102	14,16	VT1811-16020002	13,15,18
VT1800-060602	9	VT1811-04040202	17,19	VT1811-16020102	14,16
VT1800-080201	9	VT1811-04041001	15-16	VT1811-16020202	17,19
VT1800-080202	9	VT1811-04042001	18-19	VT1811-16021001	15-16
VT1800-080401	9	VT1811-04060001	13-14,17	VT1811-16022001	18-19
VT1800-080402	9	VT1811-04060002	13,15,18	623-0200	24
VT1800-080601	9	VT1811-04060102	14,16	623-0300	24
VT1800-080602	9	VT1811-04060202	17,19	623-0400	24
VT1800-100201	9	VT1811-04061001	15-16	623-0600	24
VT1800-100202	9	VT1811-04062001	18-19	623-0800	24
VT1800-100401	9	VT1811-06020001	13-14,17	623-0900	24
VT1800-100402	9	VT1811-06020002	13,15,18	623-1100	24
VT1800-100601	9	VT1811-06020102	14,16	623-4300	24
VT1800-100602	9	VT1811-06020202	17,19	623-1200	24
VT1800-120201	9	VT1811-06021001	15-16	821-0204	23
VT1800-120202	9	VT1811-06022001	18-19	821-0206	23
VT1800-120401	9	VT1811-06040001	13-14	821-0402	23
VT1800-120402	9	VT1811-06040002	13,15,18	821-0406	23
VT1800-120601	9	VT1811-06040102	14,16	821-0602	23
VT1800-120602	9	VT1811-06040202	17,19	821-0604	23
VT1800-160201	9	VT1811-06041001	15-16	821-0804	23
VT1800-160202	9	VT1811-06042001	18-19	821-0806	23
VT1800-160401	9	VT1811-06060001	13-14,17	821-0906	23
VT1800-160402	9	VT1811-06060002	13,15,18	821-0908	23
VT1800-160601	9	VT1811-06060102	14,16	821-1108	23
VT1800-160602	9	VT1811-06060202	17,19	821-1109	23
VT1800-161801	9	VT1811-06061001	15-16	1800-97243	26
VT1800-161802	9	VT1811-06062001	18-19	1800-97272	26
VT1800-220401	9	VT1811-08020001	13-14,17	1800-97300	26
VT1800-220402	9	VT1811-08020002	13,15,18	1800-97320	26
VT1800-220601	9	VT1811-08020102	14,16	1800-97336	26
VT1800-220602	9	VT1811-08020202	17,19	1800-97345	26
VT1800-240201	10	VT1811-08021001	15-16	1800-97355	26
VT1800-240202	10	VT1811-08022001	18-19	1800-97379	26
VT1800-260401	10	VT1811-08040001	13-14,17	1800-97385	26
VT1800-260402	10	VT1811-08040002	13,15,18	1800-97413	26
VT1800-320401	10	VT1811-08040102	14,16	1800-97439	26
VT1800-320402	10	VT1811-08040202	17,19	1800-97455	26
VT1800-990123	22	VT1811-08041001	15-16	1800-97479	26
VT1800-990126	22	VT1811-08042001	18-19	1800-97498	27
VT1800-990129	22	VT1811-08060001	13-14,17	1800-97505	26
VT1800-990130	22	VT1811-08060002	13,15,18	1800-97525	27
VT1800-990134	22	VT1811-08060102	14,16	1800-97545	26
VT1800-990136	22	VT1811-08060202	17,19	1800-97555	27
VT1800-990137	22	VT1811-08061001	15-16	1800-97570	27
VT1800-990138	22	VT1811-08062001	18-19	1800-97585	26
VT1800-990140	22	VT1811-10020001	13-14,17	1800-97605	27
VT1800-990142	22	VT1811-10020002	13,15,18	1800-97613	26
VT1800-990146	22	VT1811-10020102	14,16	1800-97635	27
VT1800-990148	22	VT1811-10022001	18-19	1800-97679	26
VT1800-990150	22	VT1811-10040001	13-14,17	1800-97728	26
VT1800-990151	22	VT1811-10040002	13,15,18	1800-97740	26
VT1800-990155	22	VT1811-10040102	14,16	1800-97775	26
VT1800-990158	22	VT1811-10042001	18-19	1800-97815	26

Article No.	Page	Article No.	Page	Article No.	Page
1811-9523	23	99005-0302	33	99221-0806	38
1811-9525	23	99005-0402	33	99221-0906	38
1811-9530	23	99005-0503	33	99221-1007	38
1811-9534	23	99005-0604	33	99221-1209	38
1811-9536	23	99005-0805	33	99221-1210	38
1811-9538	23	99005-0806	33	99221-1412	38
1811-9540	23	99005-0906	33	99221-1614	38
1811-9542	23	99005-1008	33	99221-2795	38
1811-9546	23	99005-1209	33	99221-3925	38
1811-9548	23	99005-1210	33	99221-6339	38
1811-9550	23	99005-1411	33	99221-7906	38
1811-9552	23	99005-1512	33	99221-9563	38
1811-9554	23	99005-1613	33	99401-0402	38
1811-9560	23	99005-1814	33	99401-0604	38
1811-9564	23	99005-2016	33	99401-0806	38
1811-9570	23	99005-4303	33	99401-1008	38
1811-9580	23	99118-0201	36	99401-1210	38
1811-9800	25	99118-0302	36	99501-0402	37
1811-9810	24	99118-0402	36	99501-0503	37
1811-9814	24	99118-0603	36	99501-0604	37
1811-9820	24	99118-0604	36	99501-0806	37
1811-9830	24	99118-0804	36	99501-0906	37
1811-9840	24	99118-0855	36	99501-1008	37
9002-02540178-100	27	99118-1006	36	99501-1209	37
9002-04000200-100	27	99118-1208	36	99605-0014	39
9002-06000200-100	27	99118-1410	36	99605-00149	39
9002-10000200-100	27	99118-1611	36	99606-0022	39
99001-0305	37	99118-2014	36	99606-00229	39
99001-0307	37	99118-2781	36		
99001-0310	37	99118-3902	36		
99001-0315	37	99118-4303	36		
99001-0335	37	99118-6343	36		
99001-0402	37	99118-7904	36		
99001-0503	37	99118-7955	36		
99001-0604	37	99118-9563	36		
99001-0805	37	99150-0425	34		
99001-0806	37	99150-0604	34		
99001-0906	37	99150-0806	34		
99001-1008	37	99150-1007	34		
99001-1209	37	99150-1208	34		
99001-1210	37	99150-1410	34		
99001-1411	37	99150-1611	34		
99001-1613	37	99150-2014	34		
99001-4303	37	99150-2785	34		
99003-0402	34	99150-3925	34		
99003-0425	34	99150-5908	34		
99003-0503	34	99150-6341	34		
99003-0604	34	99150-7906	34		
99003-0806	34	99150-9565	34		
99003-1008	34	99151-0425	35		
99003-1208	34	99151-0604	35		
99003-1209	34	99151-0806	35		
99003-1411	34	99151-1007	35		
99003-1611	34	99151-1208	35		
99003-4303	34	99151-1410	35		
99004-0402	33	99151-1611	35		
99004-0503	33	99151-2014	35		
99004-0604	33	99151-2785	35		
99004-0806	33	99151-3925	35		
99004-1008	33	99151-5908	35		
99004-1209	33	99151-6341	35		
99004-1210	33	99151-7906	35		
99004-1411	33	99151-9565	35		
99004-1512	33	99221-0403	38		
99004-1613	33	99221-0425	38		
99004-4303	33	99221-0604	38		

MANY SOLUTIONS FROM ONE MODULAR SYSTEM:

EISELE **BASICLINE**

Standard components for pneumatics

EISELE **BASICLINE** gives our customers a wide choice of our stock of approximately 5,000 standardized connection components. We can therefore deliver at very short notice a complete range of screw joints, plug connectors, matching tubes and a wide spectrum of accessories. Many of these EISELE products are authorized for use by major automotive manufacturers like Audi, Daimler or Volkswagen.

EISELE **INOXLINE**

Stainless steel connection solutions

Stainless steel connections are frequently called for systems in the food and pharmaceutical sectors – and they are essential for many applications. Based on the design of our tried-and-tested standard components, we supply a broad range of media-resistant connections made of corrosion-proof and acid-resistant stainless steel. The connections are equally tough enough for aggressive production environments and cleaning products.



BASICLINE

FROM STANDARDIZED TO HIGHLY INDIVIDUAL

EISELE **LIQUIDLINE**

Connections for cooling water

The through-flow-optimized connections in the EISELE **LIQUIDLINE** are perfectly suited for applications with closed cooling-water cycles. All parts in contact with media are made of a brass alloy not susceptible to dezincification. When combined with the tubes, connections with FKM seals are resistant to many media as well as high temperatures.

EISELE **MULTILINE**

Multiple couplings for multiple media connections

From plant installations, to maintenance and repair, the couplings in the EISELE **MULTILINE** join separate components or complete modules in a safe, efficient and space-saving way with the simple, centralized, plug and screw joint connectors. In machines with combined air and liquid inlets, the connections discourage assembly mistakes. They can also be coupled and uncoupled under pressure thanks to the integrated shut-off valves.





Flow optimized
coolant connections

LIQUIDLINE



Connectors made of non-corrosive
and acid-resistant stainless steel

INOXLINE



Around 4000 connection
components for pneumatics
and vacuum

BASICLINE



Multiple couplings and multiple
media connections for
pneumatics, fluids and electronics

MULTILINE

EXPERTS IN CONNECTIONS

QUALITY CONNECTION COMPONENTS

FOR COMPRESSED AIR, VACUUM, GASES,
LIQUIDS, ELECTRICAL AND ELECTRONIC SIGNALS

EISELE

EISELE GmbH
Lise-Meitner-Straße 8/1
71332 Waiblingen | Germany

Telephone +49 (0) 7151-1719-0
Fax +49 (0) 7151-1719-290

info@eisele.eu
www.eisele.eu