

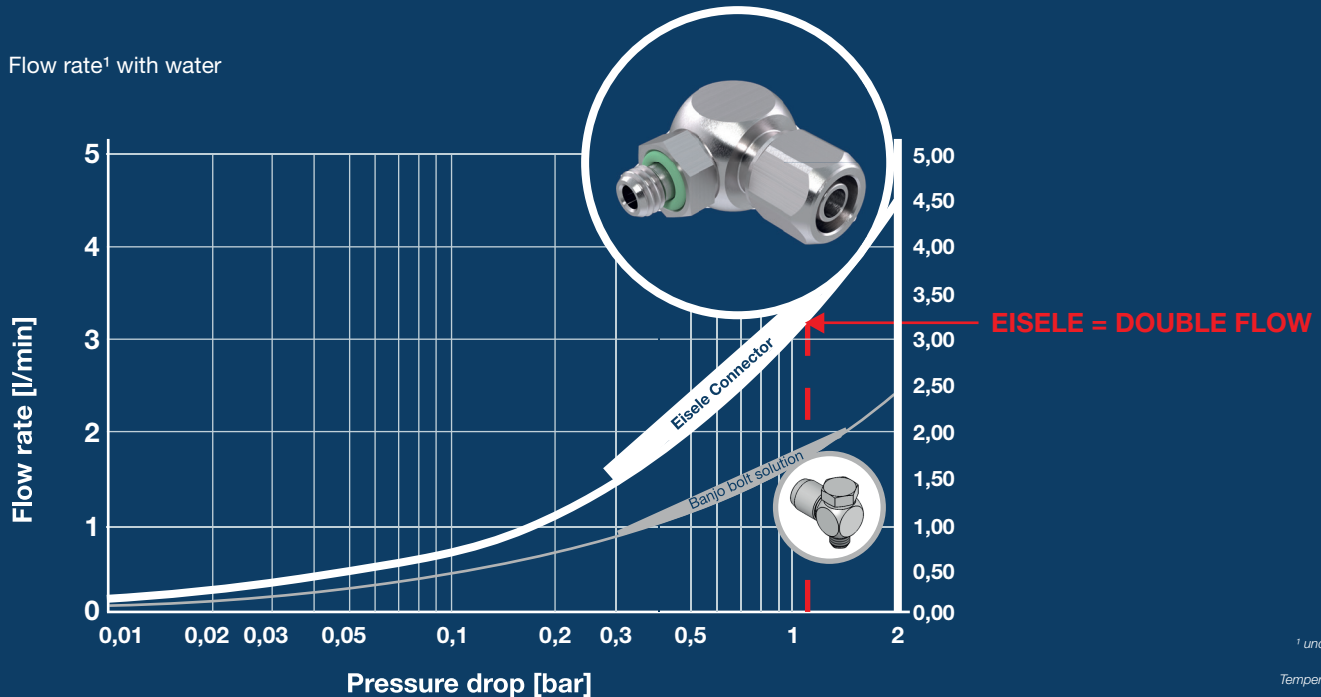
CONNECTORS FOR COOLING WATER

Eisele

Member of **HEIN** Connector Group

Comparison between Eisele Connector and Banjo bolt solution

Flow rate¹ with water



¹ under ideal conditions with suitable tube
Temperature and pressure loss to VDI/VDE 2173



BENEFITS

Space-saving and optimized installation space:

Maximize your limited installation space with our space-saving stainless steel connections.

Optimum line for cooling media:

Ensure a first-class line for your cooling media thanks to our high-quality stainless steel clamp connections, which offer optimum corrosion protection thanks to stainless steel. The connection enables a significantly higher flow rate than conventional banjo bolt solutions.

Flexible swing function:

Our clamp connections allow easy swing even when installed for flexible adjustments and positioning

Robust, durable, tight and reliable:

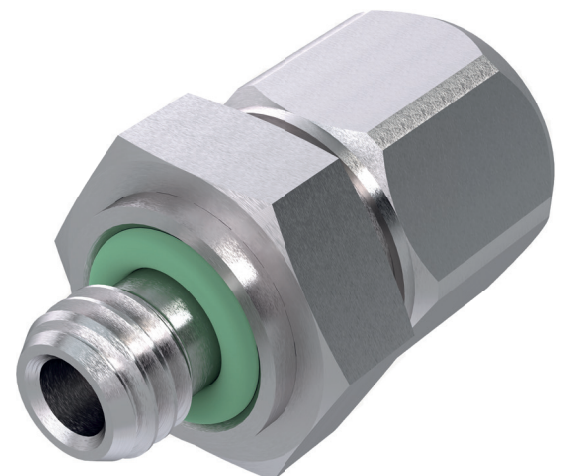
Rely on the robustness, durability and high tightness of our stainless steel clamp connections for complete reliability of your application. High process reliability by ensuring identical flow in different positions.

Environmentally friendly and safe:

Our stainless steel compression fittings are lead-free, corrosion-resistant and REACH/PFAS compliant, so you can meet your application requirements and protect the environment.

Attractive conditions:

Benefit from attractive prices to implement your project in a budget-friendly way.



CONNECTORS FOR COOLING WATER



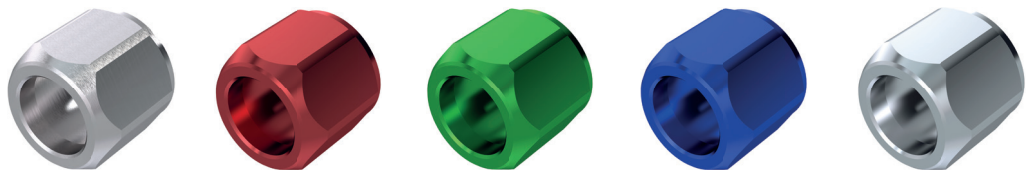
Member of **HENN** Connector Group

CONNECTORS WITH UNION NUT SPECIALLY FOR THE LASER INDUSTRY



DESCRIPTION

- Material: Stainless steel 1.4301 (AISI 304) / 1.4307 (AISI 304L)
- Nut material: 1.4301 (AISI 304) / 1.4307 (AISI 304L) alternatively anodized aluminium in colour
- Chambered O-ring
- Seal material: EPDM = PFAS-free, alternatively FKM*
- Temperature range: -4°F to 248°F | -20°C to 120°C**
- Working pressure range: -13.7 to 217.5 psi | -0.95 to 15 bar
- Thread: M5/M7/G1/8*
- Tube: OD6 / ID4*



ARTICLE



Part no.	Seal	Thread	Tube	Union nut	
				Stainless steel	Aluminium
SA2051EPP-500406VV	EPDM	M5	OD6 / ID4	W1	RED, GREEN, BLUE, NATURE
SA2051EPP-480406VV	EPDM	M7	OD6 / ID4	W1	RED, GREEN, BLUE, NATURE
SA2051EPP-020406VV	EPDM	G1/8	OD6 / ID4	W1	RED, GREEN, BLUE, NATURE
SA2051VT-500406VV	FKM	M5	OD6 / ID4	W1	RED, GREEN, BLUE, NATURE
SA2051VT-480406VV	FKM	M7	OD6 / ID4	W1	RED, GREEN, BLUE, NATURE
SA2051VT-020406VV	FKM	G1/8	OD6 / ID4	W1	RED, GREEN, BLUE, NATURE



Part no.	Seal	Thread	Tube	Union nut	
				Stainless steel	Aluminium
SA2052EPP-500406VV	EPDM	M5	OD6 / ID4	W1	RED, GREEN, BLUE, NATURE
SA2052EPP-480406VV	EPDM	M7	OD6 / ID4	W1	RED, GREEN, BLUE, NATURE
SA2052EPP-020406VV	EPDM	G1/8	OD6 / ID4	W1	RED, GREEN, BLUE, NATURE
SA2052VT-500406VV	FKM	M5	OD6 / ID4	W1	RED, GREEN, BLUE, NATURE
SA2052VT-480406VV	FKM	M7	OD6 / ID4	W1	RED, GREEN, BLUE, NATURE
SA2052VT-020406VV	FKM	G1/8	OD6 / ID4	W1	RED, GREEN, BLUE, NATURE



COOLING WATER TUBES WITH LONG TERM EXPERIENCE FOR THE AUTOMOTIVE AND LASER INDUSTRY

EISELE HYDRO | TRANSLUCENT

- Made of polyether-polyurethane (PU-H)
- Color transparent: natural, red, blue
- External calibration; for use with Eisele plug connectors
- Temperature range -31 to 140 °F (-35 to +60 °C)
- Free of halogen, plasticizers, PWIS
- Impervious to buckling and drag chain compliant
- FDA compliant according to 21 CFR 177.2600
- Suitable for compressed air, water and vacuum

EISELE ProWeld

- Made of polyether-polyurethane
- Color black (red, blue, green, white)
- External calibration; for use with Eisele plug connectors
- Operating temperature: -31 to 194 °F (-35 to +90 °C)
- Free of plasticizers, PWIS, halogen, copper and PTFE
- Impervious to buckling and drag chain compliant
- Resistant to UV, hydrolysis and microbes
- Flame-retardant according to UL94 V0 to V2
- Suitable for employment in welding
- Suitable for compressed air, water and vacuum